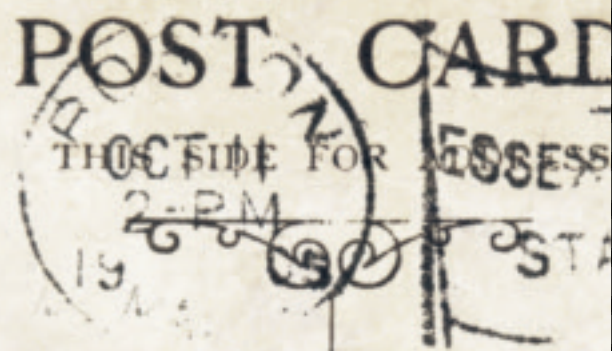


RUBINETTERIE  
treemme  
*instruments for water*

BAMFORTH'S LIFE MODEL SERIES, (ENGLAND) N.Y.C.



Miss Marian L.  
26 Avon St  
Cliff

IN A WUNDERKAMMER ONE CAN FIND LEGENDS AND MYSTERIES THAT ANIMATE A CHAOTIC UNIVERSE OF OBJECTS, BEING PLACED ON SHELVES OR ENCLOSED IN AN INFINITY OF DRAWERS OF ALL KINDS OF SHAPES AND SIZES. CURIOSITY IS INVINCIBLE IN THE HUMAN SOUL, IS THE SOURCE OF PASSION FOR WONDERFUL OBJECTS, INCLUDING THOSE CREATED IN THE RECENT PAST. IN REVOLT AGAINST A WORLD THAT WANTS EVERYONE TO BE HOMOLOGATED, THE INTEREST IN WHIMSICAL AND EVEN MAGICAL DESIGN IS GRADUALLY REGAINING ITS VIGOR IN THE ERA OF TECHNOLOGY. TREEMME EXHIBITS ITS OWN WUNDERKAMMER IN WHICH PIECES ARE SELECTED AND PRESENTED IN A CONTEMPORARY CONTEXT THROUGH A SUCCESSION OF OBJECTS BELONGING TO A RECENT PAST, WITH THE AIM OF TRANSPORTING THE VISITOR

INTO THE PURE REALM OF AMAZEMENT, INSPIRING THEIR DESIRE OF DISCOVERY, GRANTING THEM THE PRIVACY FROM PRYING EYES, INVASIONS AND NOISES.

IN UNA WUNDERKAMMER È POSSIBILE TROVARE, LEGGENDE E MISTERI CHE ANIMANO UNA INFINITÀ CAOTICA DI OGGETTI, COLLOCATI IN SCAFFALI O RACCHIUSI IN UN'INFINITÀ DI CASSETTI DI OGNI FOGGIA E MISURA. LA CURIOSITÀ È INVINCIBILE NELL'ANIMO UMANO E COSÌ PURE LA PASSIONE PER OGGETTI MERAVIGLIOSI, ANCHE DI UN RECENTE PASSATO. PER RIFLESSO AD UN MONDO CHE CI VUOLE SEMPRE PIÙ OMOLOGATI, L'INTERESSE PER IL DESIGN, ESTROSO E UN PO' MAGICO, SEMBRA AVERE RIACQUISTATO VIGORE NEGLI ANNI DELLA TECNOLOGIA. TREEMME PRESENTA LA PROPRIA



WUNDERKAMMER. PEZZI SELEZIONATI, PRESENTATI IN UN CONTESTO CONTEMPORANEO ATTRAVERSO UN SUSSEGUIRSI DI OGGETTI APPARTENENTI A UN RECENTE PASSATO, CON LO SCOPO DI TRASPORTARE IL VISITATORE NEL PURO REGNO DELLO STUPORE, IN UN DESIDERIO DI SCOPERTA, COSÌ COME LA VITA È PRIVATA, DIFESA DAGLI SGUARDI INDISCRETI, DALLE INVASIONI E DAI RUMORI.



l'universo  
in una stanza



## COMPANY

FOUR DECADES AFTER IT WAS FOUNDED, TREEMME RUBINETTERIE CONTINUES TO PROPOSE NEW COLLECTIONS RANGING FROM THE MOST TRADITIONAL TO THE MOST INNOVATIVE, WHILE PRESERVING THOSE CHARACTERISTICS THAT HAVE ALLOWED IT TO FLOURISH AND PROSPER: HIGH QUALITY, IMPECCABLE SERVICE AND THE ADDED VALUE OF MADE IN ITALY. IN RECENT YEARS, THE COMPANY HAS ENJOYED GREAT SUCCESS IN RELATION TO DESIGN, FOCUSING ON THE PERSONALISATION AND INNOVATION OF ITS PRODUCTS WITHOUT NEGLECTING THE CLASSIC AND MORE TRADITIONAL LINES.

TREEMME RUBINETTERIE HAS RECEIVED A NUMBER OF PRESTIGIOUS AWARDS, INCLUDING DESIGN PLUS, IN 2007, FOR BLOK BY GIANCARLO VEGNI, AND IN 2011, FOR PHILO, DESIGNED BY GIANLUCA BELLI/PHI CUBO AND FOR LIGHT, DESIGNED BY DANILO FEDELI. THE 5MM PROJECT, BY OCOSTUDIO E ING. CASTAGNOLI, WON THE DESIGN PLUS AWARD IN 2013, AND IN 2014 IT RECEIVED THE GRAN DESIGN ETICO, THE GERMAN DESIGN AWARD, THE PRESTIGIOUS RED DOT DESIGN AWARD, ADI DESIGN INDEX AWARD AND THE PREMIO COMPASSO D'ORO 2016. ITS LATEST CREATION, THE 22MM, AGAIN DESIGNED BY OCOSTUDIO E ING. CASTAGNOLI, WON THE ADI CERAMICS DESIGN AWARD. TREEMME RUBINETTERIE WAS FOUNDED IN 1968, IN ASCIANO, IN THE PROVINCE OF SIENA. ORIGINALLY, IT WAS CALLED "RUBINETTERIE TOSCANE 3M", A REFERENCE TO THE SINGULAR COINCIDENCE THAT THE SURNAME OF ALL THREE FOUNDING MEMBERS STARTS WITH THE LETTER M (RENATO MICHELANGIOLI, ARMANDO MEDINA AND GUIDO MENCARELLI). THE COMPANY STARTED OUT AS A WORKSHOP SPECIALISED IN THE ENTIRE TAP PRODUCTION PROCESS (CASTING, GALVANISING, POLISHING, FINISHING AND ASSEMBLING) AND QUICKLY EVOLVED THANKS TO THE OUTSTANDING ORGANIZATION THAT CHARACTERISED IT FROM DAY ONE. CONSUMERS SOON RECOGNISED AND APPRECIATED ITS METICULOUS APPROACH TO QUALITY AND CUSTOMER SERVICE. IN 1980, THE COMPANY STARTED A NEW COLOUR TREND BY LAUNCHING THE ARCOBALENO (RAINBOW) COLLECTION, CREATED WITH THE VALUABLE COLLABORATION OF THE DESIGN CALONACI & GAZZEL STUDIO. IN 1989, DURING ITS MAIN PHASE OF INTERNATIONAL EXPANSION, IT CHANGED ITS NAME, FIRST TO RUBINETTERIE 3M (WITHOUT THE WORD "TOSCANE") AND THEN TO TREEMME RUBINETTERIE, ESTABLISHING A BRAND THAT TODAY IS APPRECIATED BOTH IN ITALY AND ABROAD.





## AZIENDA

DOPO PIÙ DI 40 ANNI DI ATTIVITÀ, TREEMME RUBINETTERIE PROPONE COSTANTEMENTE NUOVE COLLEZIONI CHE SPAZIANO DALLE LINEE PIÙ INNOVATIVE A QUELLE PIÙ TRADIZIONALI, CONSERVANDO INTATTE LE CARATTERISTICHE CHE NE HANNO CONSENTITO LA NASCITA E LO SVILUPPO: ALTA QUALITÀ, SERVIZIO IMPECCABILE E LA FORZA DEL MADE IN ITALY. NEGLI ULTIMI ANNI L'AZIENDA HA OTTENUTO GRANDI RISULTATI NEL SETTORE DEL DESIGN GRAZIE AD UNA MAGGIORE CURA ALLA PERSONALIZZAZIONE E ALL'INNOVAZIONE DEI PRODOTTI, TUTTO QUESTO SENZA TRALASCIARE LE LINEE PIÙ CLASSICHE E TRADIZIONALI. TREEMME RUBINETTERIE È STATA INSIGNITA DI PRESTIGIOSI RICONOSCIMENTI QUALI IL DESIGN PLUS NEL 2007 CON BLOK DI GIANCARLO VEGNI, NEL 2011 CON PHILO DISEGNATO DA GIANLUCA BELLÌ/PHI CUBO E CON LIGHT



DI DANILO FEDELI. CON IL PROGETTO 5MM DI OCOSTUDIO E ING.CASTAGNOLI, OLTRE AL DESIGN PLUS NEL 2013, HA INOLTRE VINTO NEL 2014 ANCHE IL GRAN DESIGN ETICO, GERMAN DESIGN AWARD, IL PRESTIGIOSO RED DOT DESIGN AWARD, ADI DESIGN INDEX ED INFINE L'AMBITO PREMIO COMPASSO D'ORO ADI 2016. MENTRE PER L'ULTIMA NATA LA 22MM SEMPRE DEL DUO OCOSTUDIO E ING.CASTAGNOLI, È STATO VINTO IL PREMIO ADI CERAMICS DESIGN AWARD. TREEMME RUBINETTERIE NASCE NEL 1968 AD ASCIANO IN PROVINCIA DI SIENA. L'AZIENDA FU INIZIALMENTE CHIAMATA "RUBINETTERIE TOSCANE 3M" PER UNA CURIOSA COINCIDENZA, OVVERO L'INIZIALE DEL COGNOME DEI TRE I SOCI FONDATORI (RENATO MICHELANGIOLI, ARMANDO MEDINA E GUIDO MENCARELLI). TREEMME RUBINETTERIE NASCE COME OFFICINA ARTIGIANALE DOVE SI REALIZZA

IL CICLO COMPLETO DI PRODUZIONE DEL RUBINETTO (FONDERIA, GALVANICA, PULIMENTATURA, VERNICIATURA E ASSEMBLAGGIO) E CRESCE IN FRETTA GRAZIE ALL'OTTIMA ORGANIZZAZIONE DELLA QUALE SI AVVALE FIN DA SUBITO. I CLIENTI NON TARDANO A RICONOSCERE E AD APPREZZARE LA METICOLOSA ATTENZIONE CHE VIENE RIVOLTA ALLA QUALITÀ E AL SERVIZIO AL CONSUMATORE. NEL 1980 L'AZIENDA LANCIÒ LA MODA DEL COLORE REALIZZANDO LA COLLEZIONE ARCOBALENO CON LA PREZIOSA COLLABORAZIONE DELLO STUDIO DESIGN COLONACI & GAZZEI. NEL 1989, DURANTE LA FASE DI MAGGIOR INTERNAZIONALIZZAZIONE, IL NOME DELL'AZIENDA VIENE MODIFICATO IN "RUBINETTERIE 3M" FINO AD ARRIVARE AL PIÙ RECENTE TREEMME RUBINETTERIE, UN BRAND AD OGGI AFFERMATO E APPREZZATO ANCHE OLTRE I CONFINI NAZIONALI.

## DESIGNED IN ITALY - MADE IN ITALY

AT TREEMME RUBINETTERIE THE RAW MATERIALS AS WELL AS THE DESIGN ARE MADE IN ITALY. EVER SINCE IT WAS FOUNDED, THE COMPANY HAS BEEN CREATING ITS PRODUCTS WITH THE VALUABLE COLLABORATION OF GREAT DESIGNERS, MOSTLY ITALIAN, THANKS TO WHOM THE BRAND HAS WON A NUMBER OF AWARDS.

RECENTLY, THE TREEMME RUBINETTERIE HAS BEEN REWARDED WITH PRESTIGIOUS PRIZES SUCH AS THE GERMAN DESIGN AWARDS, THE RED DOT DESIGN AWARD, THE DESIGN PLUS AWARD, AS WELL AS THE ADI DESIGN INDEX, ADI CERAMICS AWARD AND PREMIO COMPASSO D'ORO.

TREEMME RUBINETTERIE PRESERVES THE QUALITY OF ITS PRODUCTS AND THEIR INDIVIDUAL COMPONENTS BY CAREFULLY SELECTING ITS SUPPLIERS IN ITALY AND CARRYING OUT 80% OF ITS PRODUCTION IN-HOUSE.

A WORLDWIDE NETWORK OF COMMERCIAL AGENTS, IN CONTACT WITH ALL THE MAIN NATIONAL AND INTERNATIONAL SHOWROOMS, TAKES CARE OF THE MARKETING SIDE OF THE BUSINESS. THIS DISTRIBUTION NETWORK ALLOWS THE COMPANY TO BETTER SATISFY ITS CLIENTS' NEEDS BY OFFERING IMMEDIATE ASSISTANCE AND AN INCREDIBLE 15 YEAR GUARANTEE ON ALL ITS PRODUCTS.

LA SCELTA DEL MADE IN ITALY NON AVVIENE SOLO PER LE MATERIE PRIME MA ANCHE PER IL DESIGN.

DA SEMPRE TREEMME RUBINETTERIE SI AVVALE DEL PREZIOSO CONTRIBUTO DI DESIGNER PER LO PIÙ ITALIANI PER LA PROGETTAZIONE DEI PRODOTTI, COLLABORAZIONI CHE HANNO PORTATO IL BRAND AD ESSERE PREMIATO CON NUMEROSI RICONOSCIMENTI.

NEGLI ULTIMI ANNI L'AZIENDA È STATA INSIGNITA DI PRESTIGIOSI PREMI COME IL GERMAN DESIGN AWARD, IL RED DOT DESIGN AWARD, IL DESIGN PLUS, ADI DESIGN INDEX, L'ADI CERAMICS AWARD E PREMIO COMPASSO D'ORO.

TREEMME RUBINETTERIE HA SCELTO DI CONSERVARE INTATTA LA PROVENIENZA DEI PROPRI PRODOTTI E DEI DIVERSI COMPONENTI DEGLI STESSI, SELEZIONANDO ATTENTAMENTE I FORNITORI NAZIONALI E REALIZZANDO IN STABILIMENTO PIÙ DELL'80% DELLA PRODUZIONE A CATALOGO.

LA COMMERCIALIZZAZIONE È AFFIDATA AD UNA RETE MONDIALE DI AGENTI CHE DISTRIBUISCONO I PRODOTTI NELLE PIÙ GRANDI SHOWROOM NAZIONALI ED INTERNAZIONALI. LA CAPILLARE RETE DI DISTRIBUZIONE CONSENTE ALL'AZIENDA DI SODDISFARE MAGGIORMENTE LE ESIGENZE DEI CLIENTI AI QUALI OFFRE UN'ASSISTENZA IMMEDIATA ED UNA GARANZIA DI BEN 15 ANNI SUI PROPRI PRODOTTI.





**WRAS**  
Water Regulations Advisory Scheme



NSF/ANSI 61/9  
ASME A112.18.1  
CSA B125.1  
U.P. CODE

SI RIMANDA ALL'OFFICIAL LISTING NSF PER  
CONSULTARE LA LISTA DEGLI ARTICOLI CERTIFICATI  
PLEASE CHECK THE NSF OFFICIAL LISTING  
TO VERIFY THE CERTIFIED ARTICLES

SISTEMA QUALITÀ CERTIFICATO



UNI EN ISO 9001 : 2008



## CERTIFICATIONS

TREEMME RUBINETTERIE KEEPS UPDATING AND RENEWING THE CERTIFICATIONS IT HAS OBTAINED IN RELATION TO THE QUALITY OF ITS PRODUCTS AND MANAGEMENT SYSTEMS AND THE COMPLIANCE WITH ENVIRONMENTAL POLICIES ACCORDING TO THE STANDARDS REQUIRED. RUBINETTERIE TREEMME STANDS OUT FOR THE QUALITY OF ITS PRODUCTS, ITS EXPERIENCE, TECHNOLOGY AND STYLE, AND TODAY IS PARTICULARLY FOCUSED ON ITS ENVIRONMENTAL APPROACH.

REDUCING ITS WATER CONSUMPTION AND THE QUANTITY OF LEAD AND NICKEL IN ITS PRODUCTION PROCESS ARE JUST SOME OF ITS MAIN COMMITMENTS TO THE ENVIRONMENT. THIS IS ACHIEVED BY USING THE COMPANY'S SPECIAL TECHNOLOGIES (RUVECO, ECO-CARTRIDGE, ENERGY-SAVING SYSTEM ETC.) AS WELL AS SPECIAL BRASS ALLOYS.

ATTENTION TO ENVIRONMENTAL ISSUES STARTS DURING THE VERY EARLY STAGES OF PRODUCTION, BY INTRODUCING PRODUCTION SYSTEMS WITH A VERY LOW ENVIRONMENTAL IMPACT, SUCH AS SOPHISTICATED WATER DEPURATION SYSTEMS THAT ALLOW TO RECYCLE ALL THE WATER USED IN THE CHROMIUM PLATING PROCESS. A NEW CLOSED-LOOP WASTEWATER MANAGEMENT PROCESS ALLOWS TO REDUCE CONSIDERABLY THE AMOUNT OF WATER AND CHROMIUM IN MUDDY RESIDUES. REDUCING WASTE IN THIS CASE MEANS REDUCING COSTS AS WELL AS ANY WATER-RELATED IMPACT ON THE ENVIRONMENT WHILE AT THE SAME TIME LOWERING POWER CONSUMPTION AND POLLUTION EMISSIONS AND IMPROVING EMPLOYEES' WORKING CONDITIONS.

USING ONLY MATERIALS OF THE HIGHEST QUALITY, WITH THE CHARACTERISTICS REQUIRED TO OBTAIN INTERNATIONAL PRODUCT CERTIFICATIONS, IS ANOTHER ESSENTIAL ASPECT.

INDIVIDUAL PRODUCT QUALITY CERTIFICATIONS (ACS IN FRANCE, PUB IN SINGAPORE, NSF61 IN THE US, WATERMARK IN AUSTRALIA, BELGAAQUA IN BELGIUM); ISO9001 PROCESS COMPLIANCE CERTIFICATION, AND OQC, QUALITY AND ORIGIN CERTIFICATION, WHICH GUARANTEES THE QUALITY AND ORIGIN OF PRODUCTS MADE IN ITALY.

TREEMME RUBINETTERIE POSSIEDE E PERSEGUE CON CONTINUI AGGIORNAMENTI LE CERTIFICAZIONI DI QUALITÀ DEI PRODOTTI E DEI SERVIZI DI GESTIONE, DEL RISPETTO DELLE POLITICHE AMBIENTALI SECONDO GLI STANDARD PREVISTI. RUBINETTERIE TREEMME SI DISTINGUE PER QUALITÀ, GRANDE ESPERIENZA, TECNOLOGIA, STILE, ED OGGI VUOLE FOCALIZZARE L'ATTENZIONE SULLA SENSIBILITÀ CHE L'AZIENDA PONE NEI CONFRONTI DELL'AMBIENTE.

RIDURRE IL CONSUMO DELL'ACQUA, DIMINUIRE LE QUANTITÀ DI PIOMBO E NICHEL NELLA PRODUZIONE, SONO SOLO ALCUNI DEGLI ASPETTI DI MAGGIORE IMPORTANZA PER L'ECO SOSTENIBILITÀ.

TUTTE CARATTERISTICHE RAGGIUNTE GRAZIE ALL'UTILIZZO DI SPECIALI TECNOLOGIE (RUVECO, ECO-CARTRIDGE, ENERGY-SAVING SYSTEM ETC.) DI CUI L'AZIENDA DISPONE, OLTRE ALL'UTILIZZO DI SPECIALI LEGHE DI OTTONE.

IL RISPETTO PER L'AMBIENTE VIENE CONSIDERATO SIN DALLE PRIME FASI DI PRODUZIONE, CON L'INTRODUZIONE DI CICLI PRODUTTIVI A LIVELLI MINIMI DI IMPATTO AMBIENTALE, COME I SOFISTICATI IMPIANTI DI DEPURAZIONE E RICICLO COMPLETO DELL'ACQUA UTILIZZATA PER LA CROMATURA. UN INNOVATIVO PROCESSO DI TRATTAMENTO DELLE ACQUE A CICLO CHIUSO PERMETTE, INFATTI, DI RIDURRE IN MODO CONSISTENTE IL CONTENUTO IN ACQUA E CROMO DEI FANGHI RESIDUALI DA SMALTIRE. RIDURRE LO SPRECO IN QUESTO CASO NON SIGNIFICA QUINDI SOLO ABBASSARE I COSTI ECONOMICI E AMBIENTALI LEGATI ALL'ACQUA MA ANCHE ALL'ENERGIA E ALLE EMISSIONI INQUINANTI AD ESSA COLLEGATE, OLTRE CHE TUTELARE LE CONDIZIONI DI LAVORO DEI DIPENDENTI.

SEMPRE MAGGIORE IMPORTANZA È RISERVATA ANCHE ALL'UTILIZZO DI MATERIALE DI ALTA QUALITÀ E CON CARATTERISTICHE IDONEE PER POTER ACQUISIRE LE PIÙ IMPORTANTI CERTIFICAZIONI DI PRODOTTO INTERNAZIONALI.

MARCHI DEI SINGOLI PRODOTTI (ACS FRANCESE, PUB SINGAPORESE, NSF61 AMERICANA, WATERMARK AUSTRALIANA, BELGAAQUA BELGA), MARCHIO DI PROCESSO ISO9001E DELLA CERTIFICAZIONE DI ORIGINE OQC (ORIGINE CONTROLLATA QUALITÀ) CHE GARANTISCE OLTRE ALLA QUALITÀ DEL PRODOTTO ANCHE LA REALE PROVENIENZA DEL MADE IN ITALY.



## REFERENCES

<b>Italy</b> Grand Hotel Bastiani Grosseto	La Pace Bastia Umbra	Somewhere Boutique Hotel Vouliagmeni Athens	<b>Shangri-La</b> Kota Kinabalu
Toscana Resort Castelfalfi Montaione - Firenze	La Tana Maratea	Hotel Cavo Tagoo Mykonos	<b>Taiwan</b> One Taichung
Grand Hotel Terme Castrocaro - Forlì Cesena	Sole Mare Ventimiglia	Domes Noruz Chania Creta	Le Meridien Taipei
Grand Hotel Baglioni Firenze	Colostrai Sardegna	Katikies Mykonos	<b>Mainland China</b> Star River Residential
Hotel Residence Roccamare Castiglione Della Pescaia Grosseto	Hotel Montirò S.Maria di Leuca	Manoulas Beach Hotel Mykonos	Shimao Huaijiachi
Hotel El Balear Alghero - Sardegna	<b>Croatia</b> Borovnik Tisno	Mykonos Bay Mykonos	Shimao Nanjing Xiaguan
Helvetia & Bristol Firenze	<b>France</b> Clim Hotel Paris	Mykonos No5 Mykono	Shimao Suzhou Yunhecheng
Turin Palace Torino	Mercure Pau	<b>Portugal</b> Hotel Santiago de Alfama Lisboa	Shimao Wuhan
Antico Masetto Pistoia	Mercure Bordeaux	<b>Spain</b> Las Piramides Malaga	Star River Haiyi peninsula phase III
Baja Hotel Sardegna	Mercure Hyeres	Edificio Nuñez de Balboa Madrid	Star River Haiyi peninsula phase IV
Horse Country Sardegna	Mercure Nice	Casa Alberola Alicante, Curio Collection by Hilton Alicante	Star River Shanghai hotel
Corte Fiorita Sardegna	Gray D'albion Cannes	Edificio Norte (San Pedro de Alcantara) Malaga	Star River Shanghai phase II
Il Convento Rapallo	Hostellerie De Plaisance Saint Emilion	<b>Poland</b> Indigo Hotel Warsaw	Star River Pudong phase III
La Bisaccia Sardegna	Hotel Du Pont Vieux Carcassonne	<b>Canada</b> Dorval Montreal	Star River Xi'an
Sofitel Thalassa Timi Ama Sardegna	Aigle Noir - Hôtel Fontainebleau	<b>Dominican Republic</b> Plaza Colonial Santo Domingo	Star River Hotel Pudong
Catalunya Sardegna	Hotel Michel Bras Laguiole	<b>Emirates</b> Old Town Project Dubai	Star River Tai Yuan
Club Hotel Sardegna	Hotel Best Western Beausejour Lourdes	Golf Tower Dubai	Star River Hotel Shanghai
La Valle Sardegna	Le Mas Des Herbes Blanches Joucas	<b>Saudi Arabia</b> Yusuf Bin Aïmed Kanoo Saudi Building - Ryadh	Star River Macau
Villa Cpichera Sardegna	Le Chabichou - Hôtel & Spa Courchevel	<b>South Africa</b> Deunkeld 105 Properties Johannesburg	Star River Phoenix Valley Residential
San Pietro Napoli	<b>Greece</b> The Margi Hotel Vouliagmeni Athens	<b>Malesia</b> Le Meridien Kota Kinabalu	<b>Hong Kong</b> The Cadogan 150 Belcher's Street
Viminale Roma	Candia Park Village Agios Nikolaos Creta		Belcher 97 7, Belcher's Street
Astor Modena	Milos Cove Milos		The Babington Hill 23 Babington Path
Joli Valverde Di Cesenatico	Asterias Thessaloniki		The King's Hill 38-52 Western Street
			Twin Regency 11, Tak Yip Street
			Shatin Hotel Sun Hung Kai Property
			W680 Commercial Building 680 Castle Peak Road

## DESIGNERS



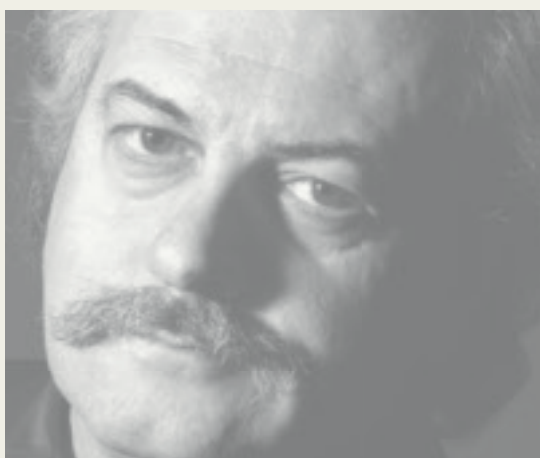
### EMANUEL GARGANO - MARCO FAGIOLI

BOTH EMANUEL GARGANO AND MARCO FAGIOLI ARE GRADUATES OF THE ISTITUTO SUPERIORE PER LE INDUSTRIE ARTISTICHE DI URBINO (1994-1998), AND AFTER A FEW YEARS OF PROFESSIONAL EXPERIENCE, THEY FOUNDED THEIR STUDIO IN UMBRIA. THEIR WORK EXPERIMENTS DIRECTLY WITH A VARIETY OF MATERIALS, USED BOTH AS VISUAL TOOLS AND AS A MODE OF EXPRESSION. THEY ARE CURRENTLY INVOLVED IN PRIVATE HOME PROJECTS, INSTALLATIONS, COMMUNICATIONS PROJECTS AND INDUSTRIAL DESIGNS. IN 2008 THEY WON THE GOOD DESIGN AWARD FROM THE CHICAGO ATHENAEUM FOR THEIR MULTIPLO PROJECT FOR THE INDESIT COMPANY. IN THAT SAME YEAR THEY ALSO RECEIVED THE KITCHEN OF THE YEAR AWARD FOR THEIR ANIMA SPACE KITCHEN PROJECT FROM THE DANISH MAGAZINE BOBEDRE, DESIGNED FOR BINOVA. THAT SAME PROJECT WAS, FURTHERMORE, ALSO CHOSEN BY ELLE DECOR INTERNATIONAL DESIGN AWARDS IN THE KITCHENS CATEGORY. THE INSTALLATION THEY DESIGNED FOR VASELLI, MARMOMACC 2009 WON THEM THE BEST COMMUNICATOR AWARD 2009. IN 2013 THEY WON THE DESIGN PLUS FOR THE COLLECTION 5MM DESIGNED TO TREEMME TAPS.



### PHICUBO \_ ALESSANDRA BERTINI - GIANLUCA BELLÌ

GIANLUCA BELLÌ COMES TO DESIGN FOLLOWING AN UNUSUAL AND NON-LINEAR PATH. DESIGN AS A PLACE WHERE MECHANICAL DESIGN, STUDIED DURING HIGH SCHOOL AT A TECHNICAL COLLEGE AND THE AESTHETIC-FORMAL EDUCATION, GAINED DURING HIS ARTISTIC STUDIES AT UNIVERSITY, SPLIT BETWEEN THE D.A.M.S. (ART, MUSIC AND PERFORMING FACULTY) OF BOLOGNA AND THE ACCADEMIA DI BELLE ARTI (FINE ARTS ACADEMY) OF FLORENCE, WHERE HE STUDIED SCULPTING. DURING THIS PERIOD HE PARTICIPATED IN VARIOUS ILLUSTRATION AND PAINTING GROUP EXHIBITIONS. THE GUIDELINE OF HIS DESIGN IS AESTHETIC AND CONCEPTUAL FUNCTIONALITY. "RETHINK THE WORLD" IS HIS DESIGN APPROACH, A MODUS OPERANDI WHICH HE SHARES WITH ARCHITECT ALESSANDRA BERTINI, A GRADUATE OF THE FACULTY OF ARCHITECTURE OF FLORENCE IN 2004 WITH A THESIS ON UNIVERSAL DESIGN. THIS IS WHAT LED TO THE CREATION OF PHICUBO. ACTIVE SINCE MARCH 2007, PHICUBO HAS BEEN INVOLVED IN DESIGN AND RESEARCH, LINKING ITS NAME TO THE TOPIC OF ECO-SUSTAINABILITY AND UNIVERSAL DESIGN, FOR WHICH IT HAS BEEN REWARDED BY THE TUSCAN REGION IN 2010 AS ONE OF THE 60 ECO-EFFICIENT COMPANIES IN TUSCANY. ASIDES THE CONTINUING RESEARCH ON BIODEGRADABLE MATERIALS AND ALTERNATIVE ENERGIES, PHICUBO COLLABORATES WITH VARIOUS ITALIAN COMPANIES IN DIFFERENT AREAS OF DESIGN, FROM THE FURNISHING SECTOR, PHARMACEUTICALS, TO ARCHITECTURE AND URBAN FURNISHINGS.



### GIANCARLO VEGNI

A DESIGNER WITH A MULTIDISCIPLINARY APPROACH, HE BOASTS A WELL-ESTABLISHED EXPERIENCE IN THE KITCHEN FURNISHING SECTOR, GAINED BY WORKING IN THE FERRETTI DESIGN TEAM SINCE 1968. SINCE 1976 HE HAS BEEN HEADING HIS STUDIO, WORKING IN THE INDUSTRIAL DESIGN, INTERIOR DESIGN AND COMMUNICATION SECTORS. HIS PROJECTS ARE BASED ON FUNCTIONALITY AND ESSENTIAL LINES. HIS ACTIVITY IS VARIED, MOVING WITH EASE BETWEEN DIFFERENT PRODUCT TYPES. HE DESIGNS KITCHENS, BATHROOMS, LIVING AREAS, SHOPS AND EXHIBITION STANDS AND WORKS IN DIFFERENT MARKET SECTORS SUCH AS FURNITURE, SAILING, CARS AND INTERIOR ARCHITECTURE. HE CONTINUALLY SEEKS THE DISTINGUISHING DETAIL OF AN OBJECT TO HIGHLIGHT ITS IDENTITY. HIS GOAL IS TO GIVE EMOTIONS AND WELL-BEING. HE WORKS FOR ESTABLISHED BRANDS SUCH AS EFFETI, FOR WHOM HE COORDINATES THE ARTISTIC DESIGN AND CORPORATE IDENTITY, EDRA, SEVEN, ANTONIO LUPI, FASEM, MAZZEI, ZANUSSI, IVECO, NOVAMOBILI, UNITALIA, BERTOCCI, LEMA, CANDY, TREEMME, VALLI&VALLI. HIGHLY REGARDED AND INTERNATIONALLY FAMOUS, HE EXPORTS THE QUALITY OF ITALIAN DESIGN AROUND THE WORLD.



### MASSIMILIANO BRACONI

WAS BORN ON 25 NOVEMBER 1974 IN CIVITA CASTELLANA. AFTER COMPLETING THE ART SCHOOL, HE GRADUATED FROM THE EUROPEAN INSTITUTE OF DESIGN (IED) IN ROME IN 2000 HE FOUNDED HIS OWN STUDIO IN VITERBO STARTING TO COLLABORATE WITH INTERNATIONAL COMPANIES SUCH AS DESIGNER, ART DIRECTOR AND ARTIST. WINS A'DESIGN AWARDS 2016, GERMAN DESIGN AWARD 2017, ICON AWARDS 2018, ICON AWARDS 2019, INDEX ADI 2019 (COMPASSO D'ORO 2020 SELECTION), THE ARCHIPRODUCT DESIGN AWARDS 2019, THE GOOD DESIGN AWARDS OF CHICAGO 2020 AND THE IF DESIGN AWARD 2020. CHAMELEONIC AND VISIONARY ARTIST, HE REALIZES HIS UTOPIAS IN THE WIDEST AND MOST LIBERATING SENSE POSSIBLE, ADVANCES HIMSELF BY CONSTANTLY SEEKING A TASTE FOR "AESTHETICS" AS AN AUTHENTIC EXPERIENCE OF THE INDIVIDUAL. CONSTANTLY SEARCHING FOR UNUSUAL VISUAL AND SENSORIAL CONCEPTS, HE COMBINES ART AND DESIGN, CREATING HIS OWN LANGUAGE PURE VISUAL FREE FROM THE USUAL AND INFECTED REALITIES. HIS PRISTINE SIGN EXAMINES HUMAN CONSCIOUSNESS, OBSERVES THE PAST AND CURRENT CULTURAL TASTE, HOWEVER HE CREATES COMELY AND VISIONARY CHIMERAS, AVANT-GARDE PRODUCTS AND WORKS THAT HE PRESENTS TO SOPHISTICATED AND ATYPICAL VIEWERS. "UNCONVENTIONAL VISIONARY ARTIST"

## STUDIO Q-BIC

Q-BIC IS A FULL SERVICE VISUAL IDENTITY AND BRANDING AGENCY. FOUNDED IN 2005 BY BROTHERS LUCA (ARCHITECT) AND MARCO BALDINI (DESIGNER) THEIR PROJECTS RANGE FROM ARCHITECTURAL STATEMENTS AND GRAPHIC IDENTITY PROJECTS THROUGH TO SCENOGRAPHY (THEATRES) AND COMMERCIAL DESIGN PROJECTS (TEMPORARY EVENTS). "WE CONCEIVE OUR DESIGN PROJECTS AS AN ATTITUDE OR STATEMENT WHERE THERE IS A RECOGNIZABLE CHARACTER. ONCE THIS CHARACTER TAKES FORM AND IDENTITY, WE ARE THEN ABLE TO DELIVER THIS IDENTITY THROUGH THE RELEVANT SPACES AND CREATIVE MEDIUMS"



## DANILO FEDELI

DANILO FEDELI WAS BORN IN LUCIGNANO (PROVINCE OF AREZZO) IN 1973. HE GRADUATED, CUM LAUDE, IN INDUSTRIAL DESIGN AT THE FACULTY OF ARCHITECTURE OF FLORENCE, WITH A THESIS ON THE BATHROOM AND ITS NEW ETHICAL AND SOCIAL DIMENSION IN RELATION TO WATER. HE WORKED AS A DESIGNER FOR A WELL-KNOWN COMPANY OPERATING IN THE SHOWER SYSTEMS SECTOR, WHERE HE GAINED SIGNIFICANT EXPERIENCE IN THE BATHROOM SECTOR, BEFORE GOING FREELANCE. IN 2008 HE FOUNDED HIS 3DF STUDIO, DEVELOPING DESIGN PROJECTS. TODAY HE COLLABORATES WITH WELL-KNOWN NATIONAL COMPANIES AND DESIGNS FURNISHING PRODUCTS AND EVEN STAGINGS FOR THE FASHION SECTOR. HE CONTINUALLY SEEKS NEW USES FOR SHAPES, AND BELIEVES THAT BEAUTY IS NOT DESIGNABLE, BUT THAT IT LIES SILENTLY IN THE SIMPLICITY OF CONTINUOUS LINES. HIS WORKS ARE A SOPHISTICATED COMBINATION OF EVERYDAY EXPERIENCES AND PASSIONS, IN A SINGLE VISION OF THE WORLD TO BE. HE HAS PARTICIPATED AT INTERNATIONAL COMPETITIONS AND HAS ACHIEVED SIGNIFICANT RESULTS. A FELLOW OF THE ADI (ITALIAN INDUSTRIAL DESIGN ASSOCIATION) AS OF 2009.



## GIAMPIERO CASTAGNOLI

GIAMPIERO CASTAGNOLI GRADUATED IN MECHANICAL ENGINEERING IN 1974. HE HAS DEDICATED HIS SUCCESSFUL CAREER TO THE BATHROOM FIXTURES INDUSTRY, HOLDING IMPORTANT MANAGERIAL ROLES IN LEADING COMPANIES BOTH IN ITALY AND ACROSS EUROPE. SINCE 1985 HE HAS COMPLETELY RENOVATED THE COMPANY'S PRODUCT RANGE AND BEEN INVOLVED IN DESIGN, PLANNING, ENGINEERING AND INTERNAL PRODUCTION. THE REGISTRATION OF SIGNIFICANT PATENTS HAS IMPROVED CONSIDERABLY THE RANGE OF PRODUCTS, ESPECIALLY IN RELATION TO TAPS (FOR EXAMPLE, THE PWS SYSTEM). DURING THE YEARS, HE HAS PUBLISHED A NUMBER OF ARTICLES IN SPECIALISED MAGAZINES AND UNIVERSITY TEXTBOOKS. SINCE 2008, HE WORKS AS A FREELANCER OFFERING HIS EXPERTISE TO A NUMBER OF LEADING COMPANIES IN THE BATHROOM FIXTURES & DESIGN BUSINESS.



## MARCO PISATI

DESIGNER FASCINATED BY NEW MATERIALS AND NEW TECHNOLOGIES, TESTS HIS IDEAS IN THE MOST EXTREME SECTORS: STARTING FROM THE AEROSPACE, DESIGNING INTERIORS BOUND TO THE CONCEPT OF SPACE HABITABILITY IN ABSENCE OF GRAVITY FOR THE A.S.I. (ITALIAN SPACE AGENCY), REACHING THE EARTH'S NOMADIC ONE, REALIZING THE FIRST EXAMPLE OF INTERACTIVE NOMADIC OFFICE (MOTORHOME ACI 2002). INVITED TO EXPOSE HIS WORKS AT LEOPOLDA EXPOSITION IN FLORENCE (DEEP INSIDE-IMAGE 2003) HE PRESENTED WITH THE COMPANY GRADO ZERO SPACE, LEADER BRAND IN THE AEROSPACE TEXTILE BRANCH, A PROTOTYPE OF A JACKET FOR ASTRONAUTS IN DIAPLEX (A TISSUE WITH A MEMORY OF SHAPES). HE COOPERATE WITH COMPANIES AS : A.S.I., ALENIA SPAZIO, IACSA, GRADO ZERO SPACE, IGUZZINI ILLUMINAZIONE, A.C.I., EMILIO PUCCI (LVMH GROUP), BANDINI RUBINETTERIE, IL BAGNO BANDINI, K8 RADIATORI, GLASS DESIGN, CERAMICA & COMPLEMENTI, 3M RUBINETTERIE.









## CONTENTS

WATERTUBE	19
5MM	33
22MM	47
3.6	59
40MM	71
WATT	85
Q30	97
T30	111
IOS	125
KEA	135
SHOWERS & THERMOSTATICS	147



# WATERTUBE

MASSIMILIANO BRACONI



“I BELIEVE IN SIMPLE VISUAL LANGUAGES AND IN TIMELESS PRODUCTS. FOR THE CREATION OF WATERTUBE I WAS INSPIRED BY THE CLASSIC PUBLIC FOUNTAINS OF THE PAST, WHERE THE WATER Poured DOWN FROM A SIMPLE COPPER TUBE. I WANTED TO CAPTURE THE PRIMITIVE ESSENCE OF THAT VISUAL PURENESS, TRANSFERRING IT TO A MODERN PRODUCT PERFECT FOR A CONTEMPORARY AND INDUSTRIAL BATHROOM”. THIS IS HOW MASSIMILIANO BRACONI, THE DESIGNER OF THIS NEW LINE, DESCRIBED THE INSPIRATION OF HIS IDEA.

“CREDO NEI SEMPLICI LINGUAGGI VISIVI E NEI VERI PRODOTTI SENZA TEMPO. PER WATERTUBE MI SONO LASCIATO ISPIRARE DALLE CLASSICHE FONTANE PUBBLICHE DEL PASSATO, QUELLE DALLE QUALI L'ACQUA SCROSCIAVA ATTRAVERSO UN SEMPLICE TUBO DI RAME. HO VOLUTO RICERCARE L'ESSENZA PRIMITIVA DI QUELLA PUREZZA VISIVA, REGALANDOLA A UN PRODOTTO MODERNO PERFETTO PER UN BAGNO CONTEMPORANEO E INDUSTRIALE”. COSÌ MASSIMILIANO BRACONI, IL DESIGNER CHE HA FIRMATO QUESTA NUOVA LINEA, RACCONTA L'ISPIRAZIONE DALLA QUALE È NATA L'IDEA.

IT 4A11 03 WT ZZ  
Washbasin mixer  
Miscelatore monocomando lavabo



IT 4A18 01 WT ZZ  
Washbasin mixer  
Miscelatore monocomando lavabo













RWIT 4AA5 IS 02  
Concealed washbasin mixer  
Miscelatore monocomando lavabo incasso





RWIT 4AD8 04 04  
Concealed bath/shower mixer  
Miscelatore vasca/doccia incasso



IT RTBR 409 IS  
3 functions ceiling shower-head  
Soffione a soffitto 3 funzioni





5MM  
EMANUEL GARGANO  
MARCO FAGIOLI  
GIAMPIERO GASTAGNOLI



Premio Compasso d'Oro ADI 2016

DESIGN PLUS



German  
Design Award



reddot design award

grandesignEtico 



5MM IS CREATED COMPLETELY IN SATIN STAINLESS STEEL (FREE FROM ANY TRACE OF IRON, CHROME OR NICKEL) AND IS AVAILABLE IN THE FLAT SURFACE VERSION (55 MM LONG, 210 MM DEEP AND 155 MM HIGH) AND IN THE WALL VERSION (150 MM LONG, 220 MM DEEP AND 60 MM HIGH). THE 5MM DESIGN EXPRESSES THE ESSENTIAL CHARACTERISTICS OF THE TECHNOLOGY THAT GENERATED IT - ITS CONSTANT THICKNESS IS IN FACT FIVE MILLIMETRES - AS WELL AS THE OUTFLOW OF WATER FROM ITS SPOUT, AND THE INTERNAL PASSAGE WITH ALL ITS MIXING CAPACITY. THIS PATENT ACTUALLY ALLOWS WATER TO PASS THROUGH FIVE MILLIMETRES EVEN IN THE FLAT VERSION. USING A SINGLE THICKNESS FOR ALL PARTS OF THE TAP, FOR THE CONTROL HANDLES AND ALSO FOR ALL SERIES APPLICATIONS MAKE THE 5MM DESIGN LIGHT, IMPALPABLE... ALMOST DELICATE. THIS IS A TECHNOLOGY WHERE EVERY DETAIL HAS BEEN STUDIED TO ENSURE AN INNOVATIVE APPEARANCE, AN AVANT-GARDE LINE AND AT THE SAME TIME PAY THE GREATEST ATTENTION TO ECO-SUSTAINABILITY AND SAVING WATER.

5MM È REALIZZATO COMPLETAMENTE IN ACCIAIO INOX SATINATO (ASSENTE QUALSIASI TRACCIA DI PIOMBO, CROMO E NICHEL) ED È DISPONIBILE NELLA VERSIONE DA PIANO (55 MM DI LARGHEZZA, 210 MM DI PROFONDITÀ E 155 MM DI ALTEZZA) E IN QUELLA A PARETE (150 MM DI LARGHEZZA, 220 MM DI PROFONDITÀ E 60 MM DI ALTEZZA). IL DESIGN DI 5MM ESPRIME QUELLE CHE SONO LE CARATTERISTICHE ESSENZIALI DELLA TECNOLOGIA CHE LO HA GENERATO, CINQUE MILLIMETRI È INFATTI LO SPESSORE COSTANTE IN CUI AVVIENE, OLTRE ALLA FUORIUSCITA DELL'ACQUA DALLA BOCCA, ANCHE IL PASSAGGIO INTERNO CON TUTTE LE SUE DINAMICHE DI MISCELAZIONE. QUESTO BREVETTO INFATTI PERMETTE IL PASSAGGIO DELL'ACQUA IN CINQUE MILLIMETRI ANCHE NELLA VERSIONE DA PIANO. L'UTILIZZO DI UN UNICO SPESSORE PER TUTTI I COMPONENTI DEL RUBINETTO, PER LE LEVE DI COMANDO E ANCHE PER TUTTE LE APPLICAZIONI DELLA SERIE RENDONO IL DESIGN DI 5MM LEGGERO, IMPALPABILE... QUASI ETEREO. SI TRATTA DI UNA TECNOLOGIA STUDIATA NEI MINIMI PARTICOLARI PER GARANTIRE UN'ESTETICA INNOVATIVA, UNA LINEA ALL'AVANGUARDIA E AL CONTEMPO UNA GRANDE ATTENZIONE ALL'ECO-SOSTENIBILITÀ E AL RISPARMIO IDRICO.





RWIT 2551 IS 10  
Concealed washbasin mixer  
Miscelatore lavabo incasso

IT 2514 IS 5F ZZ  
Washbasin mixer  
Miscelatore lavabo



RWIT 2851 IS 97  
Concealed washbasin mixer  
Miscelatore lavabo incasso



STEREO

JOHN LIND HOOKER

PL 31460  
CBS  
BACK ON THE ROAD - JOE EGAN

ILPS 19202  
COLONNA SONORA ORIGINALE DEL FILM "THE HARDER THEY COME"

EXPERIENCE HENDRIX THE BEST OF JIMI HENDRIX

MS 3072  
JETHRO TULL

19075819581  
JANIS JOPLIN'S GREATEST HITS

MONLP466  
JANIS JOPLIN - PEARL

HOWLIN WOLF  
CPS  
JAMES TAYLOR FLAG

6107/83U  
GARY BROOKER

19075819581  
JANIS JOPLIN I GOT DEM OUL KOZMIC BLUES AGAN MAMA!

6107/83U  
GARY BROOKER

FABIO CONCATO - ZIO TOM

GEORGIA WALKYRIE IN COLOR  
ETEA JENNIS / AJ LAST

TP12 1077  
I GRANDI WESTERNS ITALIANI ENRICO MORRICONE

060023458910  
THE LIGHT SHIPERS ONE-ELECTRIC LIGHT ORCHESTRA

VP 80500  
ELIA FITZGERALD & LOUIS ARMSTRONG Classic Album Collection

SMRL 6208  
BURATTINO SENZA FILI - EDOARDO BENNATO

DISCHI RICORDI S.p.A.

INTO THE WILDE EDDIE VEDDER

WB 46080 (WS 19051)  
EARTH WIND & FIRE

TRACY III  
DUKE ELLINGTON AND HIS ORCHESTRA

060023458910  
ELIA FITZGERALD & LOUIS ARMSTRONG - ELIA AND LOUIS

VP 80500  
ELIA FITZGERALD & LOUIS ARMSTRONG Classic Album Collection

SMRL 6208  
BURATTINO SENZA FILI - EDOARDO BENNATO

DISCHI RICORDI S.p.A.

INTO THE WILDE EDDIE VEDDER

WB 46080 (WS 19051)  
EARTH WIND & FIRE

TRACY III  
DUKE ELLINGTON AND HIS ORCHESTRA

060023458910  
ELIA FITZGERALD & LOUIS ARMSTRONG - ELIA AND LOUIS

VP 80500  
ELIA FITZGERALD & LOUIS ARMSTRONG Classic Album Collection

SMRL 6208  
BURATTINO SENZA FILI - EDOARDO BENNATO

DISCHI RICORDI S.p.A.

INTO THE WILDE EDDIE VEDDER

WB 46080 (WS 19051)  
EARTH WIND & FIRE

TRACY III  
DUKE ELLINGTON AND HIS ORCHESTRA

060023458910  
ELIA FITZGERALD & LOUIS ARMSTRONG - ELIA AND LOUIS

VP 80500  
ELIA FITZGERALD & LOUIS ARMSTRONG Classic Album Collection

SMRL 6208  
BURATTINO SENZA FILI - EDOARDO BENNATO

DISCHI RICORDI S.p.A.

INTO THE WILDE EDDIE VEDDER

JC58064 MICKIE'S UNICORN - M-W-800 POLYDOR 2383 313 A

MAGGIE BELL • SUICIDE SAL STEELHEADS SHERMAN RECORDS 1978 24 024

GENERALOVICH STATELESS STARLESS AND BIBLE BLACK POLYDOR 2310 521

STEREO KING CRIMSON JOHN MACLAUGHLIN WITH THE ONE THIRD BAND - ELECTRIC BREARS WA 102096

JOHN EARL HOOKER CBS BACK ON THE ROAD JOE EGAN House of the Blues

W 46214 ERIC WEISSBERG AND STEVE MANDELL / DUeling BANDS THE BROKEN CIRCLE BREAKDOWN

JOSEPH WEATHER REPORT / MR. GONE VAN MONTGOMERY AND THE MUSE TENS FOR FEARS: SONGS FROM THE BIG CHAIR

1028754 RY COODER / PROP TRU YOU DROP THE WASTELAND WHEELER THE WASTELAND WHEELER SAM COOKE

1621761 VIOLATION Sex Pistols RAY CHARLES RAY CHARLES

1028754 RY COODER / PROP TRU YOU DROP THE WASTELAND WHEELER THE WASTELAND WHEELER SAM COOKE

1028754 RY COODER / PROP TRU YOU DROP THE WASTELAND WHEELER THE WASTELAND WHEELER SAM COOKE

1028754 RY COODER / PROP TRU YOU DROP THE WASTELAND WHEELER THE WASTELAND WHEELER SAM COOKE

1028754 RY COODER / PROP TRU YOU DROP THE WASTELAND WHEELER THE WASTELAND WHEELER SAM COOKE

1028754 RY COODER / PROP TRU YOU DROP THE WASTELAND WHEELER THE WASTELAND WHEELER SAM COOKE

1028754 RY COODER / PROP TRU YOU DROP THE WASTELAND WHEELER THE WASTELAND WHEELER SAM COOKE

1028754 RY COODER / PROP TRU YOU DROP THE WASTELAND WHEELER THE WASTELAND WHEELER SAM COOKE

1028754 RY COODER / PROP TRU YOU DROP THE WASTELAND WHEELER THE WASTELAND WHEELER SAM COOKE

1028754 RY COODER / PROP TRU YOU DROP THE WASTELAND WHEELER THE WASTELAND WHEELER SAM COOKE

1028754 RY COODER / PROP TRU YOU DROP THE WASTELAND WHEELER THE WASTELAND WHEELER SAM COOKE

1028754 RY COODER / PROP TRU YOU DROP THE WASTELAND WHEELER THE WASTELAND WHEELER SAM COOKE

1028754 RY COODER / PROP TRU YOU DROP THE WASTELAND WHEELER THE WASTELAND WHEELER SAM COOKE

1028754 RY COODER / PROP TRU YOU DROP THE WASTELAND WHEELER THE WASTELAND WHEELER SAM COOKE

1028754 RY COODER / PROP TRU YOU DROP THE WASTELAND WHEELER THE WASTELAND WHEELER SAM COOKE

1028754 RY COODER / PROP TRU YOU DROP THE WASTELAND WHEELER THE WASTELAND WHEELER SAM COOKE

1028754 RY COODER / PROP TRU YOU DROP THE WASTELAND WHEELER THE WASTELAND WHEELER SAM COOKE

1028754 RY COODER / PROP TRU YOU DROP THE WASTELAND WHEELER THE WASTELAND WHEELER SAM COOKE

1028754 RY COODER / PROP TRU YOU DROP THE WASTELAND WHEELER THE WASTELAND WHEELER SAM COOKE

1028754 RY COODER / PROP TRU YOU DROP THE WASTELAND WHEELER THE WASTELAND WHEELER SAM COOKE

1028754 RY COODER / PROP TRU YOU DROP THE WASTELAND WHEELER THE WASTELAND WHEELER SAM COOKE

1028754 RY COODER / PROP TRU YOU DROP THE WASTELAND WHEELER THE WASTELAND WHEELER SAM COOKE

1028754 RY COODER / PROP TRU YOU DROP THE WASTELAND WHEELER THE WASTELAND WHEELER SAM COOKE

1028754 RY COODER / PROP TRU YOU DROP THE WASTELAND WHEELER THE WASTELAND WHEELER SAM COOKE

1028754 RY COODER / PROP TRU YOU DROP THE WASTELAND WHEELER THE WASTELAND WHEELER SAM COOKE



IT 9065 IS ZZ ZZ  
50 cm. towel holder  
Portasalviette cm. 50



IT 9026 IS ZZ ZZ  
49,2 cm. bathroom shelf  
Mensola cm. 49,2



RWIT 2805 IS 12  
Concealed bath/shower mixer  
Miscelatore vasca/doccia incasso



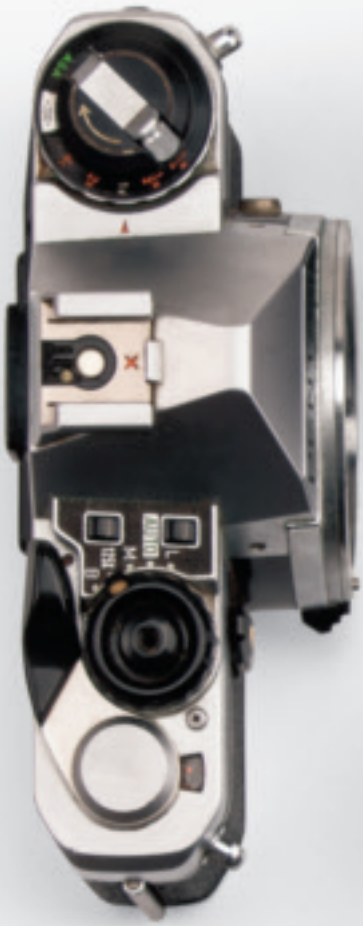


RWIT 2847 IS 01 + RWIT 2847 IS 21  
Shower head and cascade  
Soffione a parete e cascata



RWIT 2847 IS 01 + RWIT 2808 IS 96  
Shower set  
Set doccia





22MM  
EMANUEL GARGANO  
MARCO FAGIOLI  
GIAMPIERO GASTAGNOLI







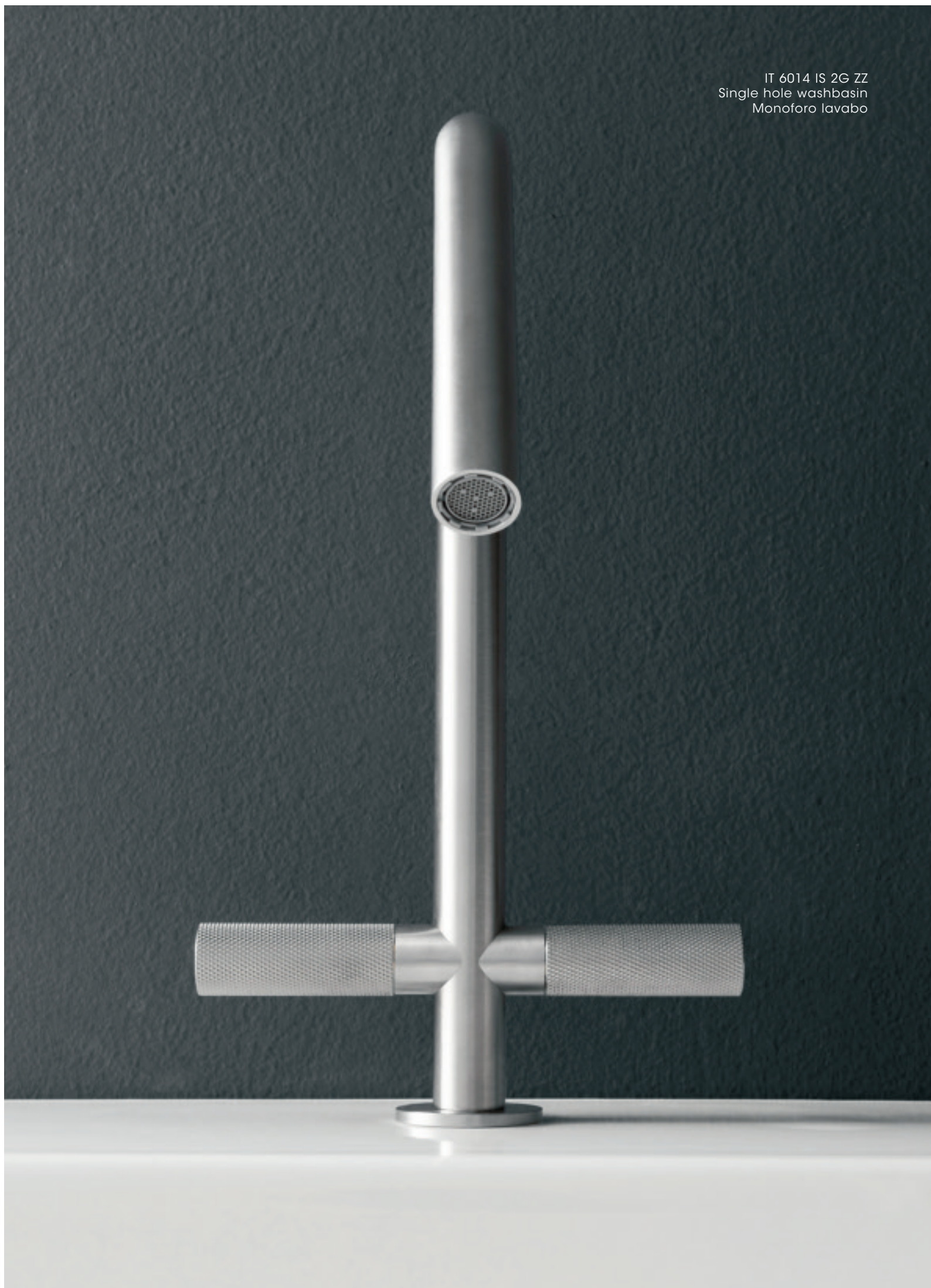
THE INSPIRATION FOR THE DESIGN OF 22MM IS BORN FROM THE ATTEMPT TO CREATE SIMPLE SHAPES, WHICH ARE EASY TO USE AND HAVE A RECOGNISABLE PERSONALITY. THE DISTINCTIVE TRAIT OF THIS NEW COLLECTION CONSISTS IN A NEW TECHNOLOGY THAT MINIATURISES THE TECHNICAL PARTS. 22MM IS IN FACT THE CONSTANT DIAMETER FOR ALL PARTS OF THE TAP, THE DISPENSER AND THEIR CONTROLS. THIS DIAMETER ENSURES GREAT AESTHETIC LIGHTNESS, CLEAN LINES AND FLEXIBILITY MEANING IT CAN BE INSERTED INTO MANY DIFFERENT TYPES OF WASHBASIN. FOR THE GREATEST TECHNICAL AND ENVIRONMENTAL RELIABILITY, THE 22MM COLLECTION HAS BEEN CREATED FROM AISI 316L STAINLESS STEEL. THE CONTROLS, WHICH HAVE BEEN MADE SPECIALLY TO MAKE THEM EASIER TO GRIP, CAN ALSO BE MADE FROM WOOD AND CORIAN.

DOPO IL GRANDE SUCCESSO DI 5MM, OCOSTUDIO E ING. CASTAGNOLI TORNANO A DISEGNARE PER TREEMME RUBINETTERIE E PRESENTA IL NUOVISSIMO PROGETTO 22MM. L'ISPIRAZIONE PER IL DESIGN DI 22MM NASCE DAL TENTATIVO DI CREARE FORME SEMPLICI, DI FACILE UTILIZZO E CHE ABBIANO UNA PERSONALITÀ RICONOSCIBILE. LA PARTICOLARITÀ DI QUESTA NUOVA COLLEZIONE CONSISTE IN UNA NUOVA TECNOLOGIA DI MINIATURIZZAZIONE DELLE PARTI TECNICHE, 22MM INFATTI È IL DIAMETRO COSTANTE PER TUTTE LE PARTI DEL RUBINETTO, DALL'EROGATORE AI SUOI COMANDI. QUESTO DIAMETRO GARANTISCE UNA GRANDE LEGGEREZZA ESTETICA, UNA PULIZIA DI SEGNO E UNA GRANDE FLESSIBILITÀ DI INSERIMENTO ALL'INTERNO DI TIPOLOGIE DI LAVABI MOLTO DIVERSI TRA LORO. PER LA MASSIMA AFFIDABILITÀ TECNICA ED ECOLOGICA LA COLLEZIONE 22MM È STATA REALIZZATA IN ACCIAIO INOX AISI 316L.

RWIT 1151 IS 03  
Concealed washbasin mixer  
Miscelatore monocomando lavabo incasso



IT 6014 IS 2G ZZ  
Single hole washbasin  
Monoforo lavabo







IT 8365 IS ZZ ZZ  
50 cm. towel holder  
Portasalviette cm. 50





RWIT 11A2 IS 01  
Concealed mixer with 2 ways diverter  
Miscelatore monocomando con deviatore 2 uscite





IT 6597 IS ZZ ZZ + RWIT 11C2 IS 01 + RWIT 2847 IS 71  
Shower set  
Set doccia





3.6

GIAMPIERO GASTAGNOLI

3.6 IS ONE OF THE NEW COLLECTIONS DESIGNED BY GIAMPIERO CASTAGNOLI, AND DURING THE ISH EXHIBITION THE PROJECT WILL UNVEIL A BRAND NEW ELECTRONIC VERSION. DESIGN AND TECHNOLOGY CONVERGE IN A PROJECT THAT ADAPTS PERFECTLY TO THE LATEST DEMANDS OF AN INCREASINGLY DIGITAL, CONNECTED MARKET. INDEED, 3.6 ELETTRONICO CAN BE CONNECTED TO SMART DIGITAL ASSISTANTS LIKE ALEXA, WHICH CAN THEN BE USED TO OPERATE THE MIXER TAP. THE NEW VERSION EXTENDS THE 3.6 SERIES, ALREADY PROPOSED WITH A CYLINDRICAL CONTROL KNOB OR A SOPHISTICATED, SLENDER LEVER WITH STRAIGHT-LINED DESIGN. 3.6 IS A COLLECTION DESIGNED TO ADAPT PERFECTLY TO EVERY BATHROOM THANKS TO ITS CONTEMPORARY AESTHETICS CHARACTERIZED BY UNDERSTATED, ELEGANT SHAPES. THE PROJECT IS PRODUCED ENTIRELY IN GRADE 316 STAINLESS STEEL.

3.6 È UNA DELLE NUOVE COLLEZIONI DISEGNATA DA GIAMPIERO CASTAGNOLI, IN OCCASIONE DELLA FIERA ISH, SI PRESENTA IN UN'INEDITA VERSIONE ELETTRONICA. DESIGN E TECNOLOGIA SI FONDONO IN UN PROGETTO CHE SI ADATTA PERFETTAMENTE ALLE ATTUALI ESIGENZE DI UN MERCATO SEMPRE PIÙ DIGITALE E CONNESSO. 3.6 ELETTRONICO PUÒ ESSERE INFATTI COLLEGATO AGLI ASSISTENTI PERSONALI INTELLIGENTI COME ALEXA ATTRAVERSO I QUALI È POSSIBILE COMANDARE IL MISCELATORE. LA NUOVA VERSIONE AMPLIA LA SERIE 3.6, GIÀ PROPOSTA CON MANOPOLA CILINDRICA OPPURE CON UNA SOFISTICATA LEVA SOTTILE DALLE LINEE SQUADRATE. 3.6 È UNA COLLEZIONE PENSATA PER ADATTARSI PERFETTAMENTE AD OGNI AMBIENTE BAGNO GRAZIE AD UN'ESTETICA CONTEMPORANEA, CARATTERIZZATA DA FORME ESSENZIALI ED ELEGANTI. SI TRATTA DI UN PROGETTO INTERAMENTE REALIZZATO IN ACCIAIO INOX 316.



IT 9A11 IS TS ZZ  
Washbasin mixer  
Miscelatore monocomando lavabo









IT 9A18 IS TZ ZZ  
Washbasin mixer  
Miscelatore monocomando lavabo



RWIT 9AA5 IS 21  
Concealed washbasin mixer  
Miscelatore monocomando lavabo incasso



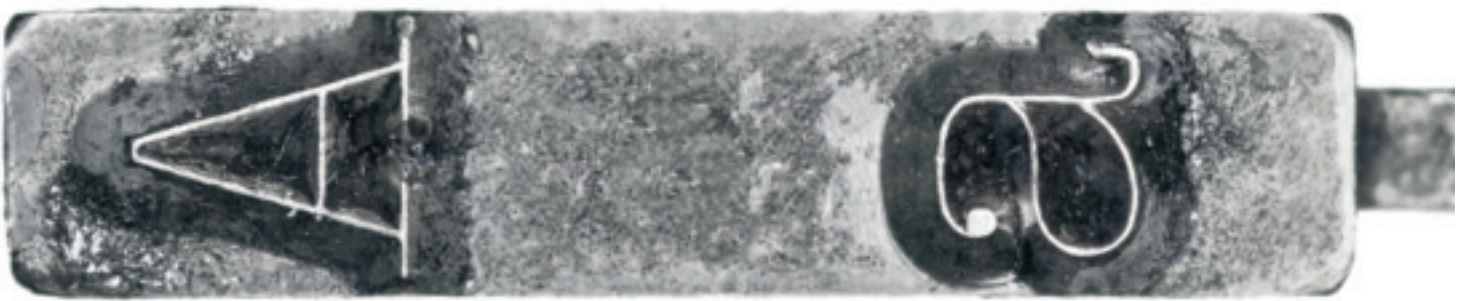
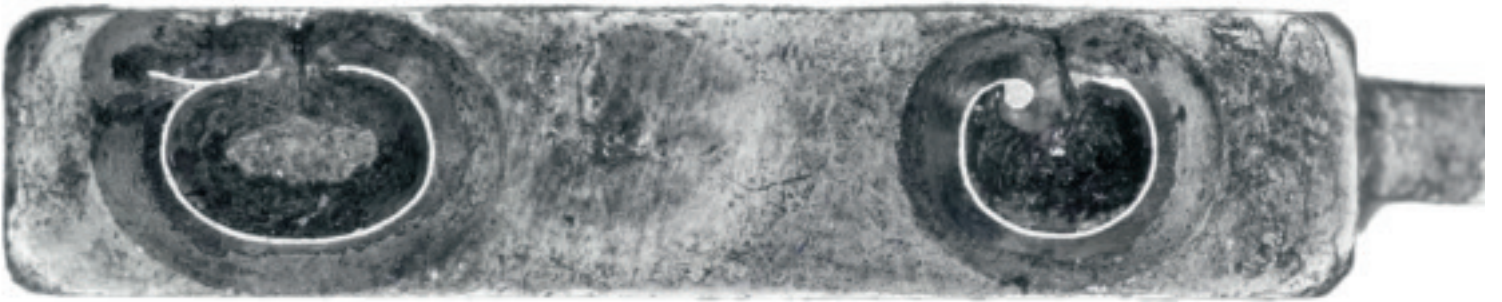
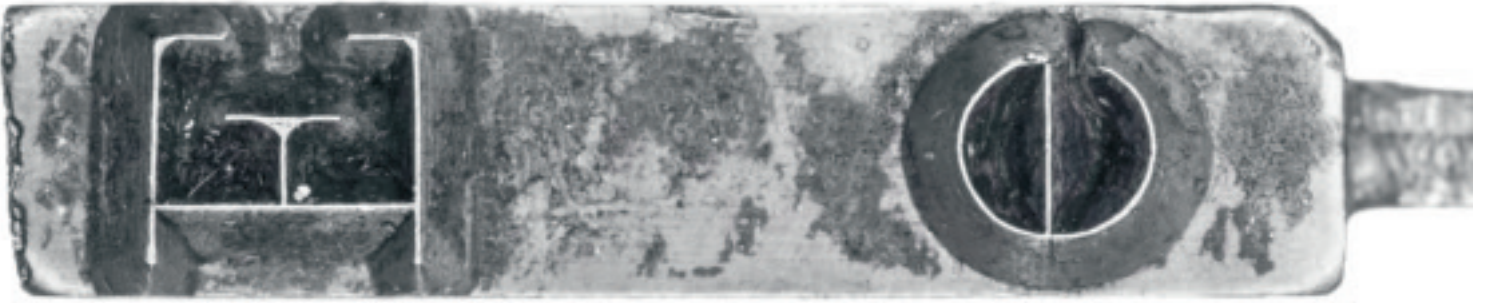
RWIT 9AD7 01 03  
Concealed bath/shower mixer  
Miscelatore vasca/doccia incasso



RWIT 9AD9 IS 21 + RWIT 2847 IS 21  
Concealed bath/shower mixer  
Miscelatore vasca/doccia incasso







40MM  
TREEMME

THE 40MM LINE PERFECTLY COMBINES CLASSIC SHAPES WITH MODERN DESIGN. THE DELICACY AND ELEGANCE OF THE SHAPES BLEND INTO A TIMELESS DESIGN, MAKING THIS A VERSATILE COLLECTION ADAPTABLE TO DIFFERENT BATHROOM SOLUTIONS. 40MM, DESIGNED BY THE COMPANY'S OWN TECHNICAL TEAM, IS MADE OF STAINLESS STEEL WITH A STRUCTURE MEASURING 40 MM IN DIAMETER. THE COMPANY DREW INSPIRATION FROM THE BASIC NEEDS OF A BATHROOM SETTING IN CREATING THIS COLLECTION, OFFERING A PRODUCT MARKED BY ITS HIGHLY PRACTICAL AND ELEGANT DESIGN.

LA LINEA 40MM CONIUGA ALLA PERFEZIONE LA CLASSICITÀ DELLE FORME ALLA MODERNITÀ DEL DESIGN. LA DELICATEZZA E L'ELEGANZA DELLE FORME SI FONDONO IN UN DISEGNO CHE VUOLE ESSERE SENZA TEMPO, RENDENDO TALE SERIE VERSATILE ED ADATTABILE ALLE DIVERSE SOLUZIONI BAGNO. 40MM, STUDIATA DALL'UFFICIO TECNICO INTERNO ALL'AZIENDA, È REALIZZATA IN ACCIAIO INOX CON UNA STRUTTURA CHE MISURA 40 MM DI DIAMETRO. PER L'IDEAZIONE DI QUESTA COLLEZIONE L'AZIENDA SI È ISPIRATA ALLE NECESSITÀ PRIMARIE DELL'AMBIENTE BAGNO, PROPONENDO UN PRODOTTO CARATTERIZZATO DA UN ALTO DESIGN FUNZIONALE ED ELEGANTE.







IT 1311 01 40 ZZ  
Washbasin mixer  
Miscelatore monocomando lavabo



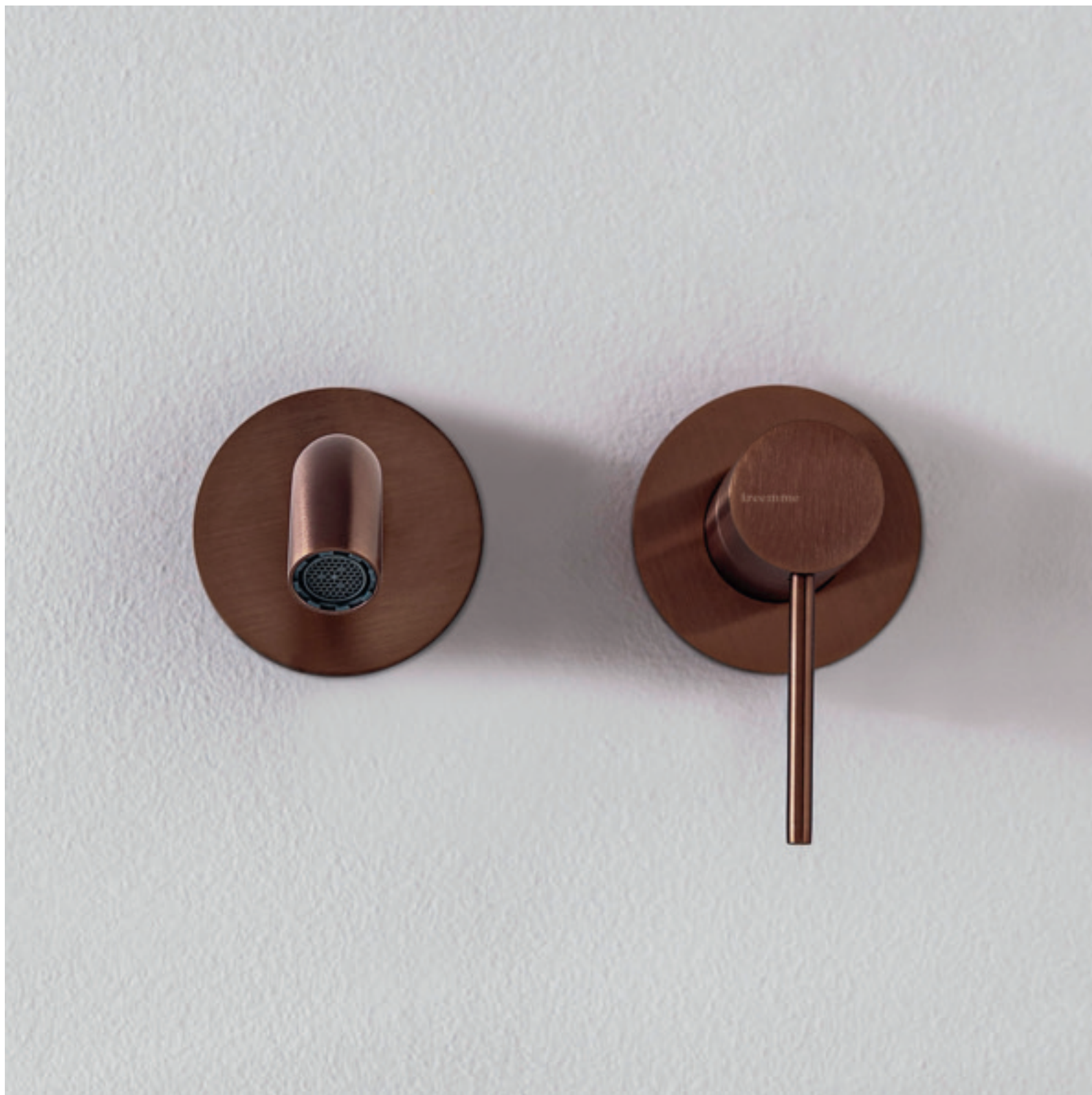
IT 1315 IS ZZ ZZ  
Electronic washbasin tap  
Rubinetto elettronico con fotocellula



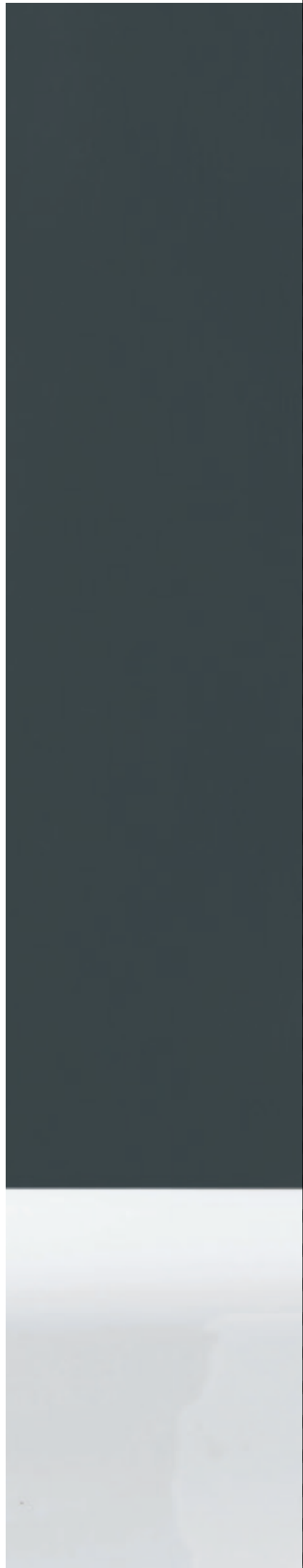
IT 1318 04 40 ZZ  
Washbasin mixer  
Miscelatore monocomando lavabo



RWIT 13C5 03 02  
Concealed washbasin mixer  
Miscelatore monocomando lavabo incasso



RWIT 13D7 IS 03  
Concealed bath/shower mixer  
Miscelatore vasca/doccia incasso





My S

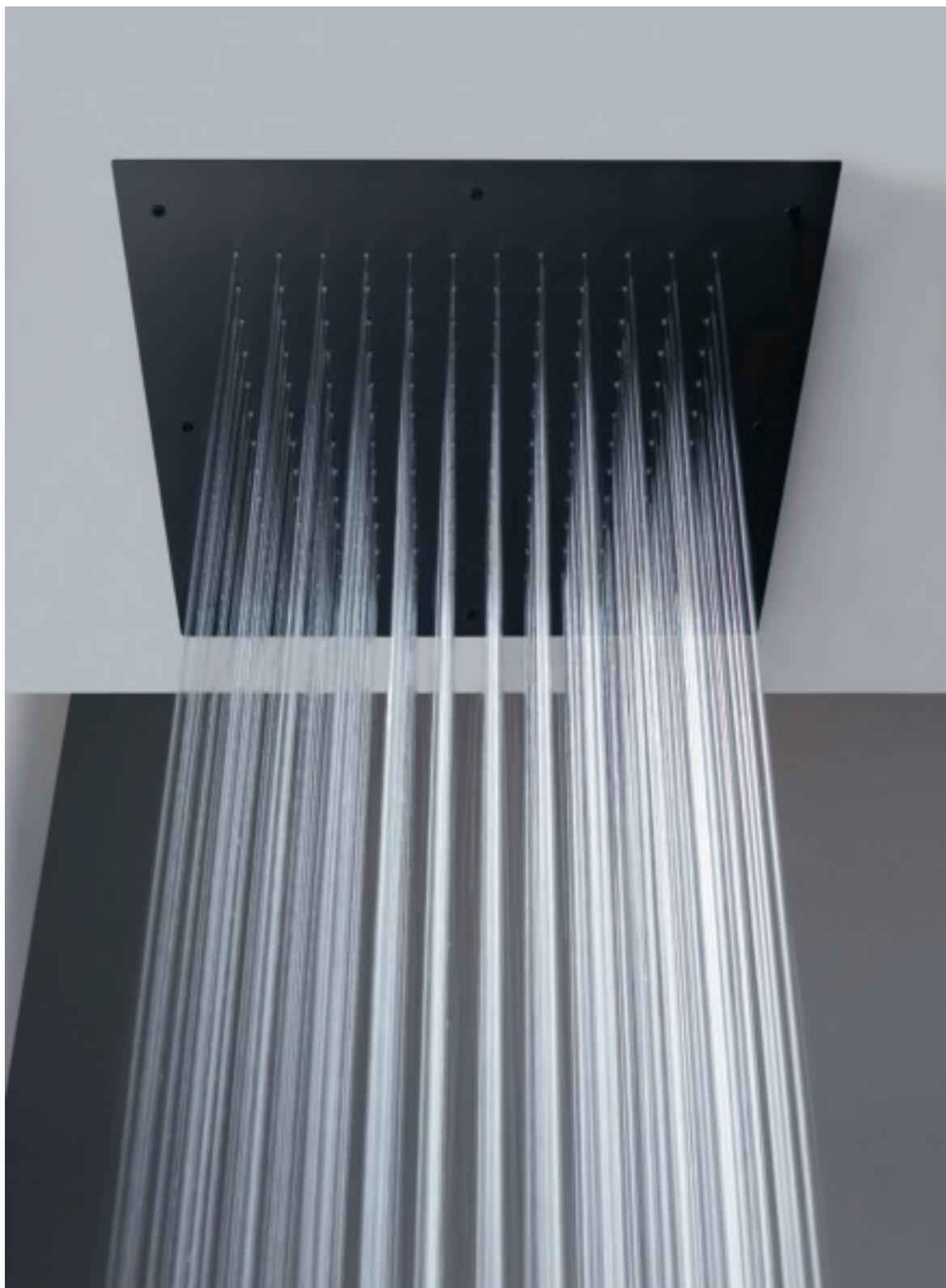




tory



IT RTBR 302 01  
Ceiling shower-head  
Soffione a soffitto



RWIT 13F2 IS 02  
Concealed mixer with 2 ways diverter  
Miscelatore monocomando con deviatore 2 uscite





WATT  
STUDIO Q-BIC

“FROM LIGHT TO WATER” THE ARCHITECTURAL FIRM Q-BIC SIGNS THE NEW WATT COLLECTION. WATT IS THE NEW PROPOSAL OF SINGLE-LEVER AND THERMOSTATIC SHOWER VALVES FOR BUILT-IN SHOWERS INSPIRED BY THE WORLD OF LIGHTING. “THE ELECTRICITY WORLD WAS PART OF MY FAMILY BACKGROUND, AND IT RESURFACED AS I DESIGNED THIS NEW COLLECTION” SAID MARCO BALDINI FROM Q-BIC. “I WANTED TO GIVE THIS LINE A VINTAGE LOOK THAT RECALLED THE OLD LIGHT SWITCHES, BUT IN A MODERN DESIGN STYLE. THE NAME WATT CAME AS A CONSEQUENCE”.

“DALLA LUCE ALL’ACQUA” LO STUDIO DI ARCHITETTURA Q-BIC FIRMA LA NUOVA COLLEZIONE WATT. WATT È LA NUOVISSIMA PROPOSTA DI MONOCOMANDO E TERMOSTATICI PER DOCCIA DA INCASSO ISPIRATI AL MONDO DELL’ILLUMINAZIONE. “IL MONDO DELL’ELETTRICITÀ FACEVA PARTE DEL MIO BACKGROUND FAMILIARE ED È RIAFFIORATO MENTRE PROGETTAVO QUESTA NUOVA COLLEZIONE” RACCONTA MARCO BALDINI DI Q-BIC. “HO QUINDI VOLUTO DARE A QUESTA LINEA UN ASPETTO VINTAGE CHE RICORDASSE LE PLACCHE ELETTRICHE DI UNA VOLTA, IL TUTTO OVVIAMENTE IN UN’OTTICA ASSOLUTAMENTE MODERNA E DI DESIGN. IL NOME WATT È POI VENUTO DA SÉ DI CONSEGUENZA”.





RWIT 2B89 NF 01 + RWIT 2BF6 NF 25  
Thermostatic Shower set  
Set doccia termostatico







RWIT 2B94 NN 01 + RWIT 2BF6 NN 45  
Shower set  
Set doccia





IT RTBR 381 03 + RWIT 2B94 03 01 + RWIT 2BF6 03 25  
Shower set  
Set doccia

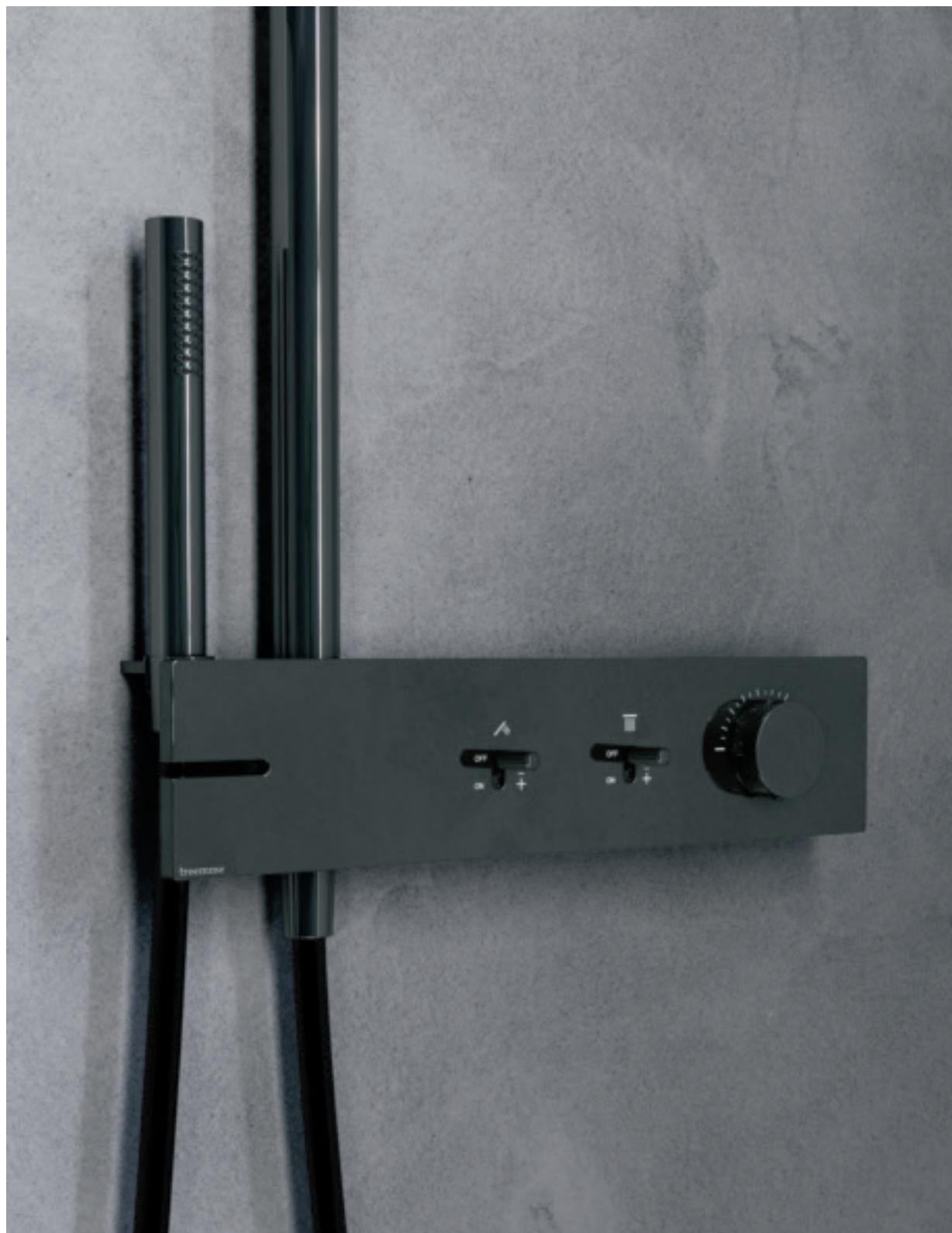




RWIT 2B86 04 01 + RWIT 2BF6 04 25  
Thermostatic Shower set  
Set doccia termostatico



IT 2B60 HH WA ZZ  
Shower set  
Gruppo doccia







Q30

MARCO PISATI & GIAMPIERO CASTAGNOLI

Q30 IS THE RESULT OF A PROJECT THAT COMBINES TECHNICAL AND FUNCTIONAL RESEARCH WITH A REFINED AND TIMELESS DESIGN. INNOVATIVE, MINIMALIST AND VERSATILE! THE Q30 SERIES WAS BORN FROM THE NEED TO CREATE A MODEL OF TAPS AND FITTINGS WITH SQUARE LINES WHERE LIGHT SHAPES PREVAIL. Q30 IS CHARACTERISED BY A COSMOPOLITAN TASTE, EASILY ADAPTABLE TO DIFFERENT STYLES, FOR THOSE WHO ARE LOOKING FOR INNOVATION AND CUTTING-EDGE SHAPES.

Q30, È FRUTTO DI UN PROCESSO PROGETTUALE CHE UNISCE LA RICERCA TECNICA E FUNZIONALE A UN DESIGN RAFFINATO SENZA TEMPO. INNOVATIVA, MINIMALISTA E VERSATILE! LA SERIE Q30 È NATA DALL'ESIGENZA DI REALIZZARE UN MODELLO DI RUBINETTERIA DALLE LINEE SQUADRATE DOVE PREVALESSE LA LEGGEREZZA ASSOLUTA DELLE FORME. Q30 È CONTRADDISTINTA DA UN GUSTO COSMOPOLITA, FACILMENTE ADATTABILE A DIVERSI STILI, CHE SI RIVOLGE A UN PUBBLICO ATTENTO ALL'INNOVAZIONE E ALLA RICERCA DI FORME ALL'AVANGUARDIA.





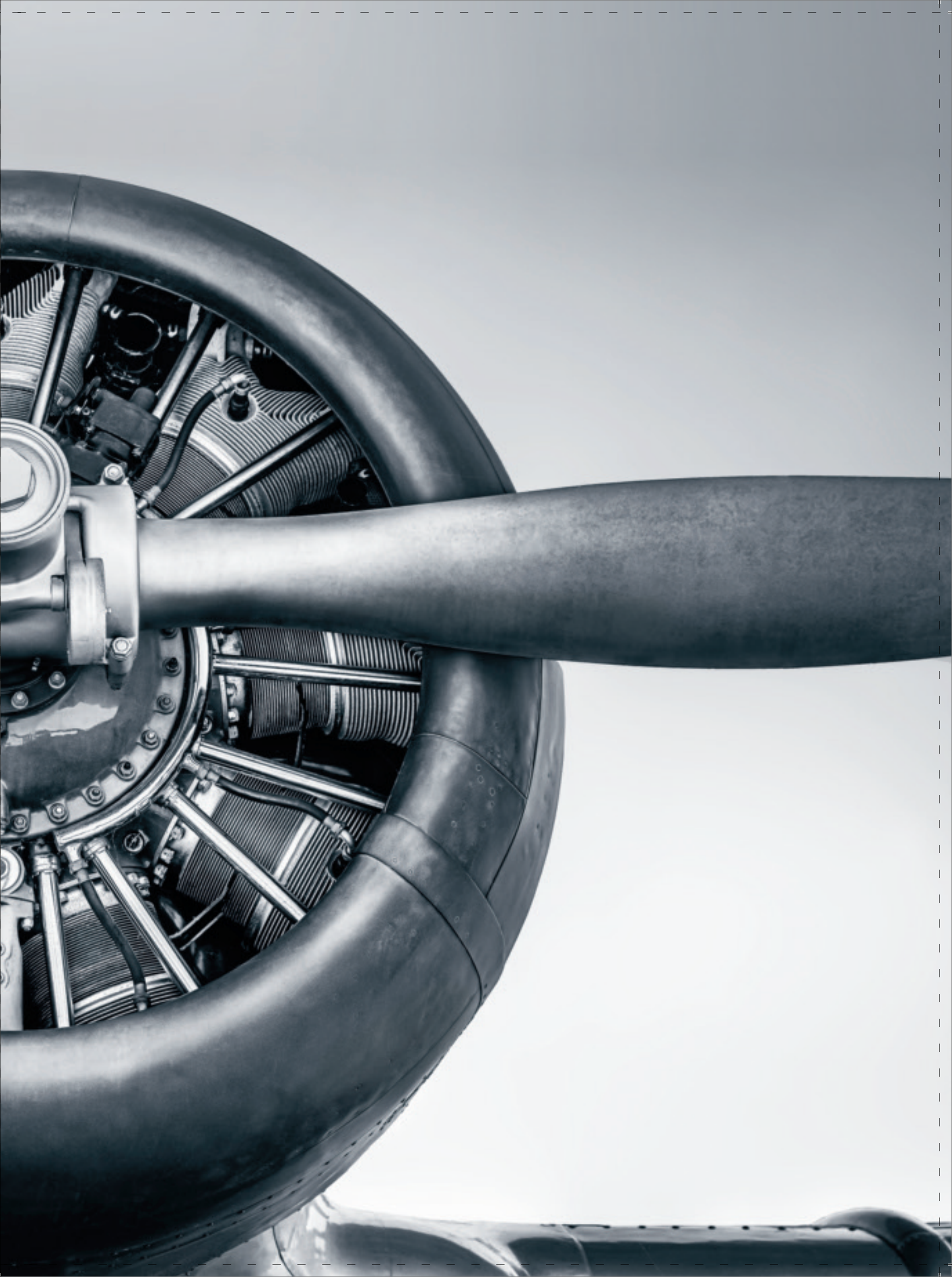
IT 4B11 CZ QT ZZ  
Washbasin mixer  
Miscelatore monocomando lavabo



IT 4B18 CZ QT ZZ  
Washbasin mixer  
Miscelatore monocomando lavabo











RWIT 4BC6 CC 01  
Concealed washbasin mixer  
Miscelatore monocomando lavabo incasso





RWIT 4BD7 HH 01  
Concealed bath/shower mixer  
Miscelatore vasca/doccia incasso



RWIT 4BD9 CC 01 + IT 6510 CC ZZ ZZ  
Shower set  
Set doccia



RWIT 4B47 NF 01 + RWIT 2B86 NF 01  
RWIT 2BF6 NF 45  
Thermostatic Shower set  
Set doccia termostatico





T30

MARCO PISATI & GIAMPIERO CASTAGNOLI

“A PROJECT AS AN ANTICIPATION, DESIGN AS A PREMONITION OF NEW NEEDS, ATTENTION TOWARDS THE OBJECTS WE USE WHILE RESPECTING THE ENVIRONMENT”. INNOVATION AND TECHNOLOGY CHARACTERISE T30, DESIGNED BY GIAMPIERO CASTAGNOLI AND MARCO PISATI, A COLLECTION OF BRASS MIXER TAPS WITH MINIMALIST AND ELEGANT LINES.

“PROGETTO COME ANTICIPAZIONE, DESIGN COME PREMONIZIONE DI NUOVI BISOGNI, ATTENZIONE AGLI OGGETTI CHE UTILIZIAMO INTORNO A NOI NEL RISPETTO DELL'AMBIENTE”. L'INNOVAZIONE E LA TECNOLOGIA CARATTERIZZANO T30 FIRMATO DA GIAMPIERO CASTAGNOLI E MARCO PISATI, È UNA COLLEZIONE DI MISCELATORI IN OTTONE DALLE LINEE MINIMALISTE ED ELEGANTI.

IT 5B11 NF ZT ZZ  
Washbasin mixer  
Miscelatore monocomando lavabo











IT 5B11 CC ZT ZZ  
Washbasin mixer  
Miscelatore monocomando lavabo









RWIT 5BD7 NF 01  
Concealed bath/shower mixer  
Miscelatore vasca/doccia incasso



RWIT 5BC6 NF Z4  
Concealed washbasin mixer  
Miscelatore monocomando lavabo incasso



RWIT 5B47 CC 02 + RWIT 5BC2 CC 02  
+ IT 6529 CC ZZ ZZ + IT RTGA 123 CC  
Shower set  
Set doccia







IOS

MARCO PISATI & GIAMPIERO CASTAGNOLI



THE IOS LINE DESIGNED BY MARCO PISATI DRAWS INSPIRATION FROM THE LINES OF THE PAST WITH A CONTEMPORARY MINIMALIST LOOK THAT WILL SUIT ANY BATHROOM. THIS MINIMALIST TAP IS INSPIRED BY CLASSIC ARCHITECTURAL "ORDERS". IN IOS, THE BASE, THE SHAFT AND THE GROOVES OF ANCIENT DORIC COLUMNS BECOME ATTRACTIVE DISTINGUISHING FEATURES. THE LEVER AND THE WATER OUTLET MOUTH HAVE CLEAR-CUT, STRINGENT FORMS, WHILE THE BODY IS PERFECTLY CYLINDRICAL. A CONTRAST OF SOFT AND MORE DECISIVE SHAPES AND LINES, WHICH FIND PERFECT HARMONY IN IOS. IOS IS AVAILABLE IN A NUMBER OF DIFFERENT FINISHES.

LA LINEA IOS DISEGNATA DA MARCO PISATI PRENDE ISPIRAZIONE DALLE LINEE DEL PASSATO CON UN'ESTETICA CONTEMPORANEA E MINIMALISTA CHE BEN SI ADATTA A QUALSIASI AMBIENTE BAGNO. SI TRATTA DI UN RUBINETTO MINIMALE ISPIRATO AGLI "ORDINI" CLASSICI ARCHITETTONICI. IN IOS IL BASAMENTO, IL FUSTO E LE SCANALATURE DELLE ANTICHE COLONNE DORICHE DIVENTANO DETTAGLI PREZIOSI CHE LO CARATTERIZZANO. LA LEVA DI COMANDO E LA BOCCA DI FUORIUSCITA DELL'ACQUA HANNO FORME NETTE E RIGOROSE, MENTRE IL CORPO È PERFETTAMENTE CILINDRICO. UN CONTRASTO DI GEOMETRIE E DI LINEE, MORBIDE E PIÙ DECISE, CHE IN IOS TROVANO UNA PERFETTA ARMONIA. IOS È DISPONIBILE IN DIVERSE FINITURE.



IT 2A18 SZ RM ZZ  
Washbasin mixer  
Miscelatore monocomando lavabo







IT 2A11 NF RM ZZ  
Washbasin mixer  
Miscelatore monocomando lavabo



RWIT 2AC5 HH 04  
Concealed washbasin mixer  
Miscelatore monocomando lavabo incasso



RWIT 2AD8 DZ 01  
Concealed bath/shower mixer  
Miscelatore vasca/doccia incasso



IT RTBR 366 CC  
Shower-head with cascade  
Soffione a parete con cascata





- +

**Volume**



KEA

MARCO PISATI & GIAMPIERO CASTAGNOLI

KEA, DESIGNED BY PISATI & CASTAGNOLI, IS A CLASSIC TAP THAT PRODUCES A STRONG VISUAL IMPACT, CELEBRATING THE AESTHETIC CANONS OF THE PAST WHILE APPLYING MODERN TECHNOLOGY AND INNOVATION. THE MOUTH IS GROOVED LIKE ANCIENT GREEK COLUMNS, WHILE THE BRASS JOYSTICKS ARE DESIGNED TO RESEMBLE ARCHITECTURAL FRAGMENTS FROM CLASSIC TEMPLES. KEA IS A LINE OF ABSOLUTE ELEGANCE. THE COLLECTION ALSO INCLUDES TWO BRAND-NEW VERSIONS: WITH MARBLE AND CRYSTAL KNOBS ILLUMINATED FROM WITHIN BY A MINIATURE LED SYSTEM, USING LIGHT TO EMPHASIZE THE DECORATION AND TRANSPARENCY OF THE MATERIAL.

KEA, DISEGNATA DA PISATI & CASTAGNOLI, È UN RUBINETTO CLASSICO DI GRANDISSIMO IMPATTO VISIVO CHE CELEBRA LA RISCOPERTA DEI CANONI ESTETICI DEL PASSATO APPLICANDO LA TECNOLOGIA E L'INNOVAZIONE MODERNA. LA BOCCA È SCANALATA COME LE ANTICHE COLONNE GRECHE, MENTRE LE MANOPOLE IN OTTONE SONO DISEGNATE IN GUISA DI FRAMMENTI ARCHITETTONICI DI TEMPLI CLASSICI. KEA È UNA LINEA DI ELEGANZA ASSOLUTA. IN COLLEZIONE SONO PROPOSTE ANCHE DUE INEDITE VERSIONI: CON MANOPOLE IN MARMO E CON MANOPOLE IN CRISTALLO ILLUMINATE DALL'INTERNO CON UN SISTEMA MINIATURIZZATO DI LED, CHE SOTTOLINEA ATTRAVERSO LA LUCE LA DECORAZIONE E LA TRASPARENZA DEL MATERIALE.







IT 7A16 US KO ZZ  
3 hole washbasin  
Batteria lavabo

IT 7A16 HH KO ZZ  
3 hole washbasin  
Batteria lavabo



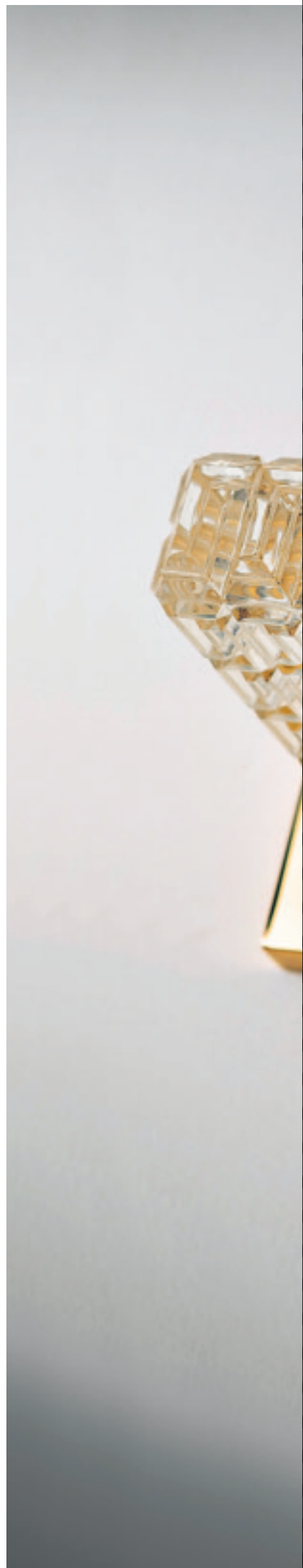
IT 7A16 DD K2 ZZ  
3 hole washbasin  
Batteria lavabo







RWIT 7A52 DD RO  
Wall mounted washbasin  
Gruppo lavabo a muro





RWIT 7A86 NL K2  
2 ways concealed thermostatic  
Termostatico incasso 2 uscite





IT RTBR 380 NL  
Anti-limescale shower-head  
Soffione a parete anticalcare





SHOWERS &  
THERMOSTATICS  
TREEMME



IT RTBR 406 IS  
Ceiling shower-head  
Soffione a soffitto

SHOWER HEADS HAVE BECOME VERITABLE DESIGNER OBJECTS IN THE BATHROOM, THEY ARE EVER MORE IMPORTANT. TREEMME RUBINETTERIE HAS ALWAYS SOUGHT TO FIND MULTIPLE SOLUTIONS, FROM DESIGNER AS WELL AS CLASSIC POINTS OF VIEW. TO ENSURE THAT THE MOMENT OF TAKING A SHOWER ASSUMES AN EVER GREATER SIGNIFICANCE, IT HAS EXTENDED ITS VAST RANGE OF MULTIPURPOSE SHOWER HEADS WITH THEIR STRIKING VISUAL IMPACT.

I SOFFIONI DOCCIA SONO DIVENTATI UN VERO E PROPRIO OGGETTO DI DESIGN ALL'INTERNO DELL'AMBIENTE BAGNO, ACQUISENDO SEMPRE MAGGIORE IMPORTANZA. TREEMME RUBINETTERIE STUDIA DA SEMPRE MOLTEPLICI SOLUZIONI, SIA DI DESIGN CHE CLASSICHE, PER GARANTIRE AL MOMENTO DELLA DOCCIA UN SIGNIFICATO SEMPRE MAGGIORE E AMPLIANDO SEMPRE DI PIÙ LA VASTISSIMA PROPOSTA DI SOFFIONI MULTIFUNZIONALI E DAL GRANDE IMPATTO SCENICO.



IT RTBR 381 IS  
Shower-head  
Soffione a parete



IT RTBR 406 IS + RWIT 2849 IS 96  
+ RWIT 2847 IS 72  
Shower set  
Set doccia





GEMM

GEMM

GEMM

GEMM





IT RTBR 389 IS  
Ceiling shower-head  
Soffione a soffitto

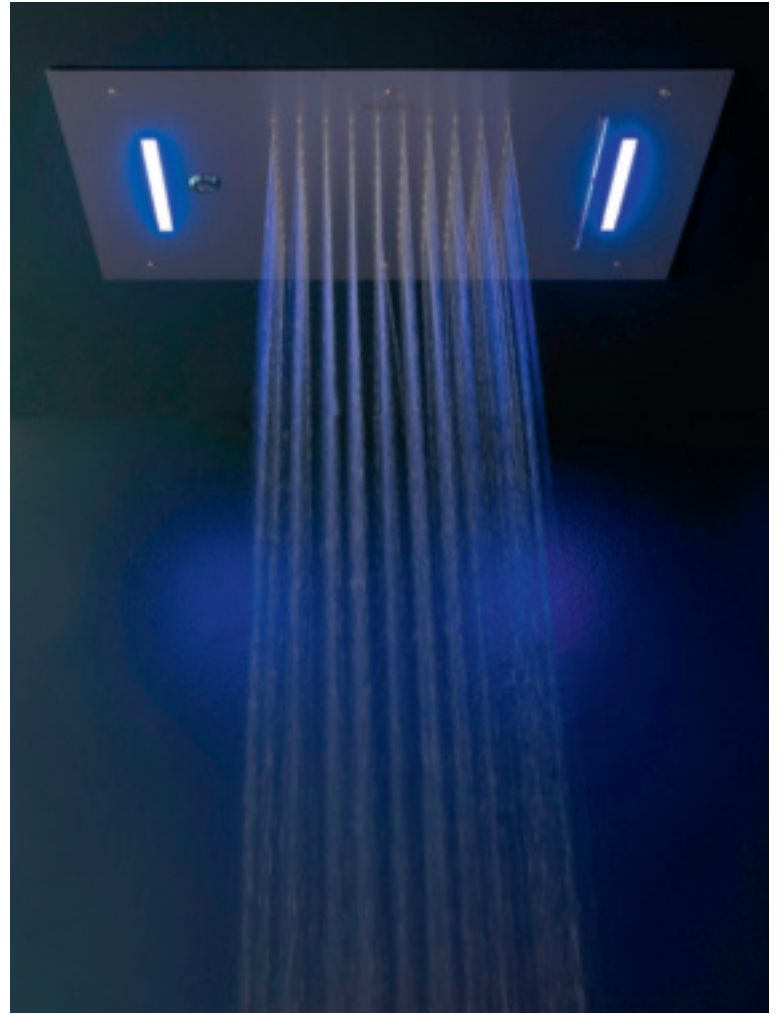




IT RTBR 386 IS  
Ceiling shower-head  
Soffione a soffitto



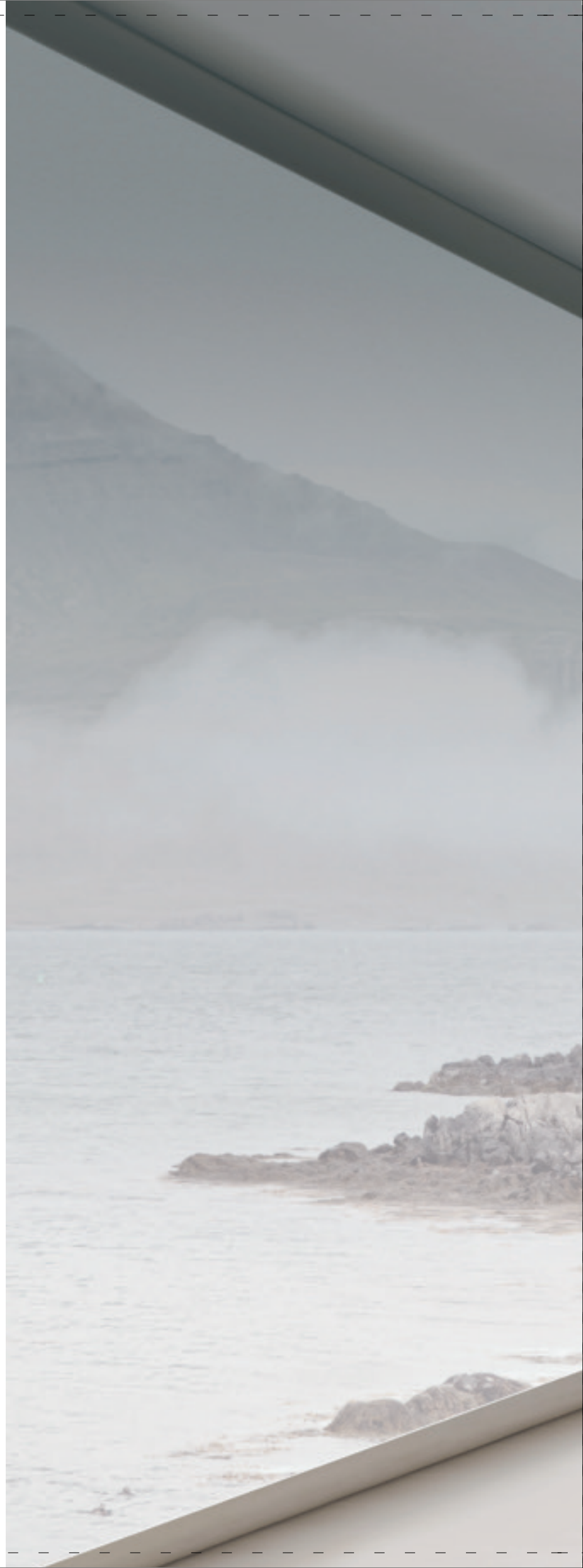
IT RTBR 387 IS  
Ceiling shower-head  
Soffione a soffitto





RWIT 8A46 01 03  
Concealed thermostat with 2 ways diverter  
Termostatico incasso con deviatore 2 uscite

IT RTBR 302 01  
+ RWIT 8A46 01 03  
+ RWIT 2847 01 71  
Shower set  
Set doccia





I dati e le immagini contenuti nel presente catalogo sono da ritenersi indicativi,  
Rubinetterie 3M S.r.l. si riserva la facoltà di modificare o adeguare anche senza obbligo di preavviso

The images and information contained in this catalogue are to be considered indicative  
and may be subject to variations without prior notice

Les images et les informations contenues dans ce catalogue sont fournies à titre indicatif  
et peuvent faire l'objet de modifications sans aucun préavis

Die in diesem Katalog enthaltenen Bilder und Daten dienen nur zur Illustration  
und können auch ohne vorherige Ankündigung geändert werden

Изображения и данные, содержащиеся в этом каталоге, следует рассматривать как ориентировочные  
и могут быть изменены даже без предварительного уведомления

Las imágenes y datos que apare en este catálogo son a modo indicativo pudiendo  
sufrir variaciones incluso sin previo aviso

本图册中包含的皆为指示性的图片与信息  
如有更改，恕不另行通知

De afbeeldingen en informatie in deze catalogus dienen als indicatief te worden beschouwd  
en kunnen zonder voorafgaande kennisgeving worden gewijzigd

Dane i obrazy zawarte w tym katalogu / cenniku należy traktować jako orientacyjne - poglądowe  
Rubinetterie 3M S.r.l. zastrzega sobie prawo do modyfikacji lub adaptacji nawet bez wcześniejszego powiadomienia

RUBINETTERIE  
**treemme**  
*instruments for water*

Rubinetterie 3M S.r.l.  
Via Mattei, 10 \_ 53041 Asciano-Siena-Italy  
Tel. +39 0577 71 82 93 \_ Export +39 0577 71 60 92  
[www.rubinetterie3m.it](http://www.rubinetterie3m.it)

Architects | 2022

